

A close-up, angled view of a black Traktor Audio 2 interface card. The card features a large, semi-transparent Traktor logo in the center. Text on the card includes 'TRAKTOR' at the top, 'DC' and 'HOST' on the right side, 'AUDIO 2' on the left side, and 'MAIN' above a green LED indicator. Below the LED is a headphone icon and another green LED. The background is a dark red with a grid of glowing dots and lines.

# TRAKTOR AUDIO 2

Manual



The information in this document is subject to change without notice and does not represent a commitment on the part of Native Instruments GmbH. The software described by this document is subject to a License Agreement and may not be copied to other media. No part of this publication may be copied, reproduced or otherwise transmitted or recorded, for any purpose, without prior written permission by Native Instruments GmbH, hereinafter referred to as Native Instruments.

“Native Instruments”, “NI” and associated logos are (registered) trademarks of Native Instruments GmbH.

Mac, Mac OS, GarageBand, Logic, iTunes, iPod, iPad, OSX, are registered trademarks of Apple Inc, registered in the U.S. and other countries. iOS is a trademark or registered trademark of Cisco in the U.S. and other countries, where it is used under license.

Windows, Windows Vista and DirectSound are registered trademarks of Microsoft Corporation in the United States and/or other countries.

All other trade marks are the property of their respective owners and use of them does not imply any affiliation with or endorsement by them.

Document authored by: Christian Schulz

Software version: 2.6.5 (10/2013)

Hardware version: TRAKTOR AUDIO 2 MK2

Special thanks to the Beta Test Team, who were invaluable not just in tracking down bugs, but in making this a better product.

---

## Germany

Native Instruments GmbH  
Schlesische Str. 29-30  
D-10997 Berlin  
Germany  
[www.native-instruments.de](http://www.native-instruments.de)

## USA

Native Instruments North America, Inc.  
6725 Sunset Boulevard  
5th Floor  
Los Angeles, CA 90028  
USA  
[www.native-instruments.com](http://www.native-instruments.com)

## Japan

Native Instruments KK  
YO Building 3F  
Jingumae 6-7-15, Shibuya-ku,  
Tokyo 150-0001  
Japan  
[www.native-instruments.co.jp](http://www.native-instruments.co.jp)



© Native Instruments GmbH, 2013. All rights reserved.

---

---

# Table of Contents

<b>1</b>	<b>Welcome to TRAKTOR AUDIO 2 .....</b>	<b>7</b>
1.1	About this Manual .....	7
1.2	Setup Overview .....	8
1.3	What is included in the Box? .....	9
1.4	Document Conventions .....	9
<b>2</b>	<b>System and Power Requirements .....</b>	<b>11</b>
2.1	Power Requirements .....	11
2.2	Software System Requirements .....	11
<b>3</b>	<b>TRAKTOR AUDIO 2 at a Glance .....</b>	<b>12</b>
3.1	Hardware Overview .....	12
3.2	Using the TRAKTOR AUDIO 2 (Setup Scenarios) .....	15
3.2.1	Overview of Internal Mixer Mode .....	15
3.2.2	Overview of External Mixer Mode .....	17
<b>4</b>	<b>Using TRAKTOR AUDIO 2 with Your Computer .....</b>	<b>20</b>
4.1	Setting up Your System for Internal Mixer Mode .....	20
4.1.1	Connecting TRAKTOR AUDIO 2 to Your Computer .....	21
4.1.2	Connecting Headphones to Your TRAKTOR AUDIO 2 .....	22
4.1.3	Connecting an Amplification System to Your TRAKTOR AUDIO 2 .....	22
4.1.4	Final Preparations in TRAKTOR .....	23
4.2	Setting up Your System for External Mixer Mode .....	25
4.2.1	Connecting TRAKTOR AUDIO 2 to Your Computer .....	25
4.2.2	Connecting TRAKTOR AUDIO 2 to Your DJ Mixer .....	26
4.2.3	Connecting Headphones to Your DJ Mixer .....	28
4.2.4	Connecting an Amplification System to Your DJ Mixer .....	28
4.2.5	Final Preparations in TRAKTOR .....	29

---

<b>5</b>	<b>Using TRAKTOR AUDIO 2 with Your iOS Device</b>	<b>31</b>
5.1	Setting up Your System for Internal Mixer Mode	32
5.1.1	Connecting TRAKTOR AUDIO 2 to Your iOS Device	32
5.1.2	Connecting Headphones to Your TRAKTOR AUDIO 2	34
5.1.3	Connecting an Amplification System to Your TRAKTOR AUDIO 2	35
5.1.4	Final Preparations in TRAKTOR DJ	35
5.2	Setting up Your System for External Mixer Mode	36
5.2.1	Connecting TRAKTOR AUDIO 2 to Your iOS Device	36
5.2.2	Connecting TRAKTOR AUDIO 2 to Your DJ Mixer	38
5.2.3	Connecting Headphones to Your DJ Mixer	40
5.2.4	Connecting an Amplification System to Your DJ Mixer	40
5.2.5	Final Preparations in TRAKTOR DJ	41
<b>6</b>	<b>Using TRAKTOR AUDIO 2 as Your Computer's Default Audio Output Device</b>	<b>44</b>
6.1	Driver Software Installation on Windows	45
6.2	Connecting TRAKTOR AUDIO 2 to Your Computer	46
6.3	Connecting Headphones to Your TRAKTOR AUDIO 2	47
6.4	Connecting an Amplification System to Your TRAKTOR AUDIO 2	48
6.5	Final Steps on Mac OS X	49
6.6	Final Steps on Windows	50
6.7	Using TRAKTOR AUDIO 2 as Audio Output Device with Your Music Software	50
<b>7</b>	<b>Advanced Configuration of Your TRAKTOR AUDIO 2</b>	<b>52</b>
7.1	Advanced Configuration on Windows (Control Panel)	52
7.1.1	Audio Settings Page	53
7.1.2	Diagnostics Page	56
7.2	Advanced Configuration on Mac OS X	59
<b>8</b>	<b>Troubleshooting and FAQ</b>	<b>61</b>
8.1	Solving Hardware-related Problems	61
8.2	How to Check Whether the TRAKTOR AUDIO 2 Drivers are Installed on Windows Correctly	62

---

---

8.3	USB Troubleshooting .....	63
8.4	Physically Re-configuring the TRAKTOR AUDIO 2 .....	63
8.5	Check your IRQs (Windows only) .....	64
8.6	Installation Folder Not Found by an Update Installer .....	64
8.7	Audio Clicks and Drop-outs When Playing Tracks .....	64
8.8	More Troubleshooting Resources .....	64
<b>9</b>	<b>Additional Documentation Resources .....</b>	<b>65</b>
9.1	Further Documentation Resources .....	65
9.2	Knowledge Base / Readme / Online Support .....	65
9.3	Forum .....	66
9.4	Updates .....	66
<b>10</b>	<b>Technical Specifications .....</b>	<b>67</b>
<b>11</b>	<b>Hardware Returns .....</b>	<b>69</b>

# 1 Welcome to TRAKTOR AUDIO 2

Thank you for purchasing the TRAKTOR AUDIO 2 audio interface. It is the ultimate hardware complement for a variety of home studio and DJ applications. The TRAKTOR AUDIO 2 provides the following features:

- Ultra-portable audio interface for your computer or iOS device
- 24-bit/48 kHz pro sound quality
- Cue and monitor – pre-listen to the next track
- Send two stereo tracks to separate mixer channels
- Two high-quality balanced audio output  $\frac{1}{8}$ " (3.5mm)-sockets
- ASIO, Core Audio, DirectSound and WASAPI driver support
- Increase TA2 volume output and charge your iOS devices with optional power supply

## 1.1 About this Manual

This manual will guide you through the basic steps you need to take to set up your TRAKTOR AUDIO 2 audio interface. After reading it, you should be able to start using TRAKTOR AUDIO 2 with the TRAKTOR software, the TRAKTOR DJ app, or as your computer's default audio output device. We recommend that you take the time to read this guide in its entirety.

With TRAKTOR or TRAKTOR DJ already installed, you will simply need to update to the latest software version. You can find detailed information on how to update TRAKTOR on your computer in TRAKTOR's Setup Guide. To update TRAKTOR DJ on your iOS device, download the latest version from the Apple App Store.

It is also suggested that you read the subsequent sections to understand how to configure the TRAKTOR AUDIO 2 audio interface with your computer or iOS device, whilst acknowledging potential Setup options, and further information available to you.

## 1.2 Setup Overview

This section provides a quick overview of the various steps required to get your TRAKTOR AUDIO 2 up and running, all of which will be described in greater detail in further sections of this manual.

- **Using TRAKTOR AUDIO 2 with Your Computer:** For Internal Mixer Mode, connect the TRAKTOR AUDIO 2 audio interface to your computer, and connect headphones and an amplification system to it. For External Mixer Mode, connect the TRAKTOR AUDIO 2 audio interface to your computer and a DJ mixer.  
For more information on Internal and External mixer modes see section [↑3.2, Using the TRAKTOR AUDIO 2 \(Setup Scenarios\)](#).  
For detailed instructions on setting up TRAKTOR AUDIO 2 with your computer, please proceed to section [↑4, Using TRAKTOR AUDIO 2 with Your Computer](#).
- **Using TRAKTOR AUDIO 2 with Your iOS device:** For Internal Mixer Mode, connect the TRAKTOR AUDIO 2 audio interface to your iOS device, and connect headphones and an amplification system to it. For External Mixer Mode, connect the TRAKTOR AUDIO 2 audio interface to your iOS device and a DJ mixer.  
For detailed instructions on setting up TRAKTOR AUDIO 2 with your iOS device, please proceed to section [↑5, Using TRAKTOR AUDIO 2 with Your iOS Device](#).
- **Using TRAKTOR AUDIO 2 as Your Computer's Default Audio Output Device:** Connect the TRAKTOR AUDIO 2 audio interface to your computer, connect headphones and an amplification system to it. Then adjust the settings in your computer's system preferences.  
For detailed instructions on using TRAKTOR AUDIO 2 as your computer's default audio output device, please proceed to section [↑6, Using TRAKTOR AUDIO 2 as Your Computer's Default Audio Output Device](#).
- **Advanced Configuration of Your TRAKTOR AUDIO 2:** The advanced configuration settings of the TRAKTOR AUDIO 2 can be accessed in the Control Panel software of Windows, or in the Audio MIDI Setup menu on OS X. For detailed instructions on how to access the advanced configuration settings, please proceed to section [↑7, Advanced Configuration of Your TRAKTOR AUDIO 2](#).



## 1.3 What is included in the Box?

The TRAKTOR AUDIO 2 box contains the following items:

- The **TRAKTOR AUDIO 2** audio interface
- The **Mini USB cable**
- The **Native Instruments iOS device connection cable**
- The registration flyer with your TRAKTOR LE 2 software serial number, your TRAKTOR AUDIO 2 hardware serial number, and a link to the hardware registration page, where you can register your hardware and download the TRAKTOR LE 2 software
- The Safety Instructions Flyer

## 1.4 Document Conventions

This document uses particular formatting to point out special facts and to warn you of potential issues. The icons introducing the following notes let you see what kind of information can be expected:



Whenever this exclamation mark icon appears, you should read the corresponding note carefully and follow the instructions and hints given there if applicable.



This light bulb icon indicates that a note contains useful extra information. This information may often help you to solve a task more efficiently, but does not necessarily apply to the setup or operating systems you are using; however, it's always worth a look.

Furthermore, the following formatting is used:

- Text appearing in (drop-down) menus (such as *Open...*, *Save as...*) and paths to locations on your hard drive or other storage devices is printed in *italics*.
- Text referring to elements appearing on the screen (labels of buttons, controls, text next to checkboxes, etc.) is printed in **light blue**. Whenever you see this formatting applied, you will find the same text appearing on your computer screen.

- Text referring to elements printed on hardware is formatted **orange**. Whenever you see this formatting applied, you will find the same text appearing on the hardware.
- Important names and concepts are printed in **bold**.
- ▶ Single instructions are introduced by this play button type arrow.
- Results of actions are introduced by this smaller arrow.

### **Naming Convention**

Throughout the documentation, we will refer to the TRAKTOR AUDIO 2 hardware whether as “TRAKTOR AUDIO 2” or abbreviate “TA2.”

## 2 System and Power Requirements

### 2.1 Power Requirements

When using the TA2 with your computer, the device will be powered by the standard USB connection.

When using the TA2 with TRAKTOR DJ on your iOS device, it will receive power from the iOS device in order to function. Running the iOS device off battery power with the TA2 connected will considerably reduce battery life. In order to allow longer mixing sessions, it is recommended to use the optional power supply (which can be purchased separately in the Native Instruments Online Shop) to power the audio interface. This power supply will also charge the battery of the connected iOS device.

### 2.2 Software System Requirements

For the minimum system requirements your computer needs to meet, see the TRAKTOR specifications section of the Native Instruments website:

<http://www.native-instruments.com/en/products/traktor/dj-software/traktor-pro-2/specifications/>.

To check the compatibility with several operating systems, please have a look at: <http://www.native-instruments.com/compatibility>.

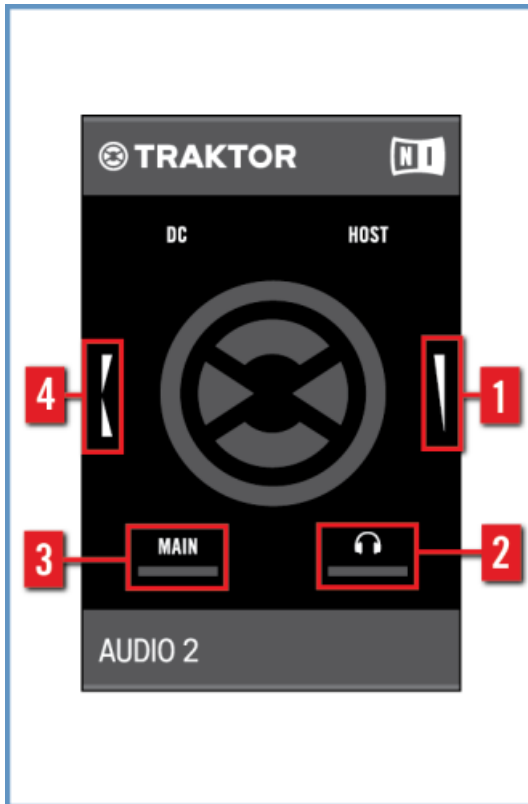
## 3 TRAKTOR AUDIO 2 at a Glance

This section will provide you with an overview of the hardware components on the TA2. It also explains both setup scenarios, Internal Mixer Mode and External Mixer Mode when used either with computer or iOS device.

### 3.1 Hardware Overview

#### Top Panel

The image below shows a view of the top panel of the TA2.



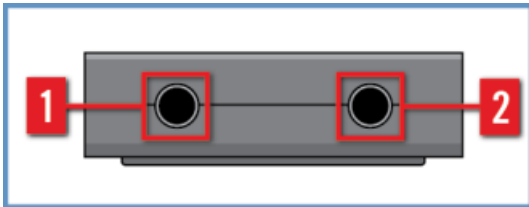
Top view of the TA2.

- (1) **Headphones Volume Encoder:** This encoder controls the volume of the Headphones output. When the software is set to External Mixing Mode, this encoder will be ignored by the software.
- (2) **Headphones Signal Indicator:** This LED will light in relation to the Headphones' output level. When the output level is higher the LED will be brighter.
- (3) **MAIN Signal Indicator:** This LED will light in relation to the output level of the **MAIN** output. When the output level is higher the LED will be brighter.

(4) **Cue Mix Encoder:** This encoder is used to control the mix heard in headphones. When moving the encoder towards the rear of the TA2, you will hear more of the headphone/cue signal in the headphones. Moving the encoder towards the front of the unit results in hearing more of the Main output in the headphones. When TRAKTOR or TRAKTOR DJ is used in External Mixer Mode, the encoder will have no function.

## Front Panel

The image below shows a view of the front panel of the TA2.



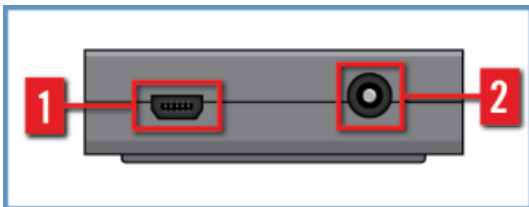
Front panel of the TA2.

(1) **MAIN Output socket:** This stereo  $\frac{1}{8}$ " socket is for connecting speakers or an amplification system when using in Internal Mixing Mode, or for connecting to a DJ mixer channel when using in External Mixer Mode. This output is always running at full volume.

(2) **Headphones Output socket:** This stereo  $\frac{1}{8}$ " socket is for connecting a set of stereo headphones when using in Internal Mixing Mode, or for connecting to a DJ mixer channel when using in External Mixer Mode.

## Rear Panel

The image below shows a view of the rear panel of the TA2.



Rear panel of the TA2.

(1) **Mini USB Socket:** This socket connects the TRAKTOR AUDIO 2 to your computer or iOS device. The computer's USB connection handles data transmission and provides bus power to your TRAKTOR AUDIO 2. No external power supply is required.



The Mini USB socket is a special socket designed for use with the included USB cables. It is recommended to only use the included cables to connect TA 2.

(2) **DC Power Socket:** When using the TRAKTOR AUDIO 2 with an iOS device, it is recommended to use the optional power supply to provide power to the iOS device.

## 3.2 Using the TRAKTOR AUDIO 2 (Setup Scenarios)

The TRAKTOR AUDIO 2 addresses two specific use-cases when used with TRAKTOR or TRAKTOR DJ: **Internal Mixer Mode** and **External Mixer Mode**.

Both use-cases employ two stereo outputs, but the signals assigned to those outputs differ. Additionally, the purposes of the encoders change depending on the use-case. You can find more information in the following section [↑3.2.1, Overview of Internal Mixer Mode](#) and [↑3.2.2, Overview of External Mixer Mode](#).

Furthermore, the TRAKTOR AUDIO 2 works as a **class-compliant audio interface for Windows and Mac OS X**.



A driver is required for Windows and needs to be downloaded from the Native Instruments website if TRAKTOR software is not installed.

### 3.2.1 Overview of Internal Mixer Mode

When TRAKTOR or TRAKTOR DJ is used in Internal Mixer Mode, the **MAIN** output will be dedicated to the Main Mix and the Headphones output is used for headphones.

The two encoders will affect the Headphones output – one encoder will control the volume of the headphones while the other encoder controls the Cue Mix (whether the DJ hears the Cued track, the Main Mix, or a blend of both).

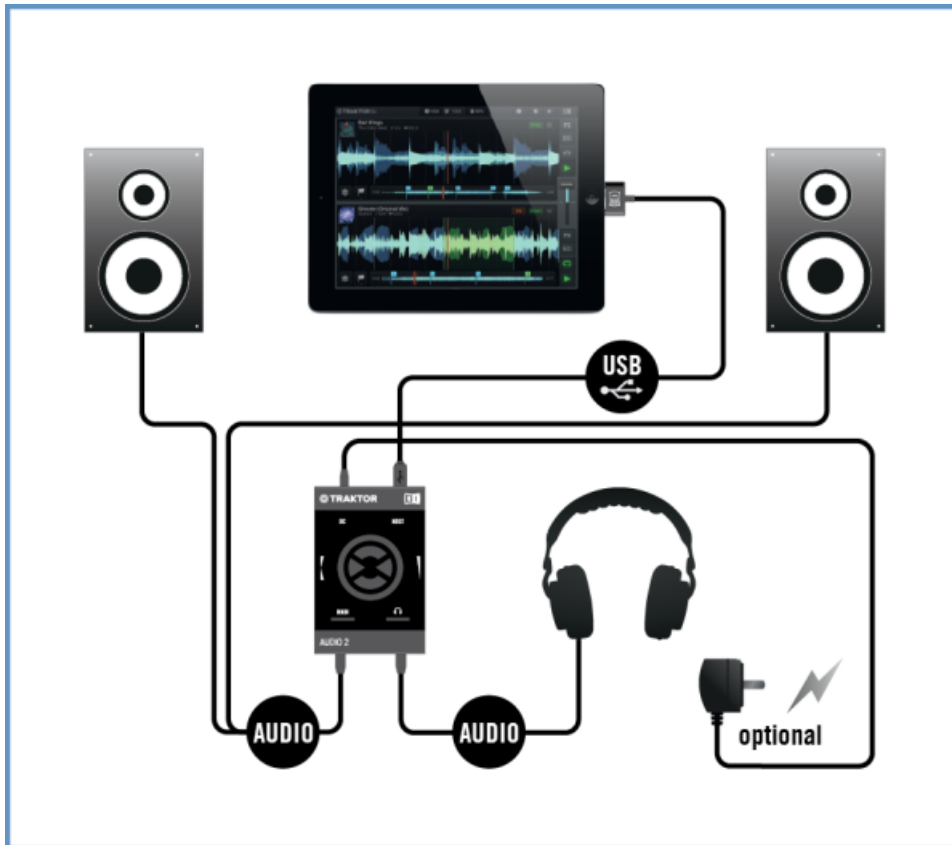
The headphones are plugged directly into the Headphones output in order to monitor while using another cable in the **MAIN** output to attach the TRAKTOR AUDIO 2 to a set of speakers or amplifier. The following image shows the TRAKTOR AUDIO 2 connected to a computer used in Internal Mixer Mode:



Setup overview of using TA2 in Internal Mixer Mode with a computer.

The following image shows the TRAKTOR AUDIO 2 connected to an iOS device used in Internal Mixer Mode:



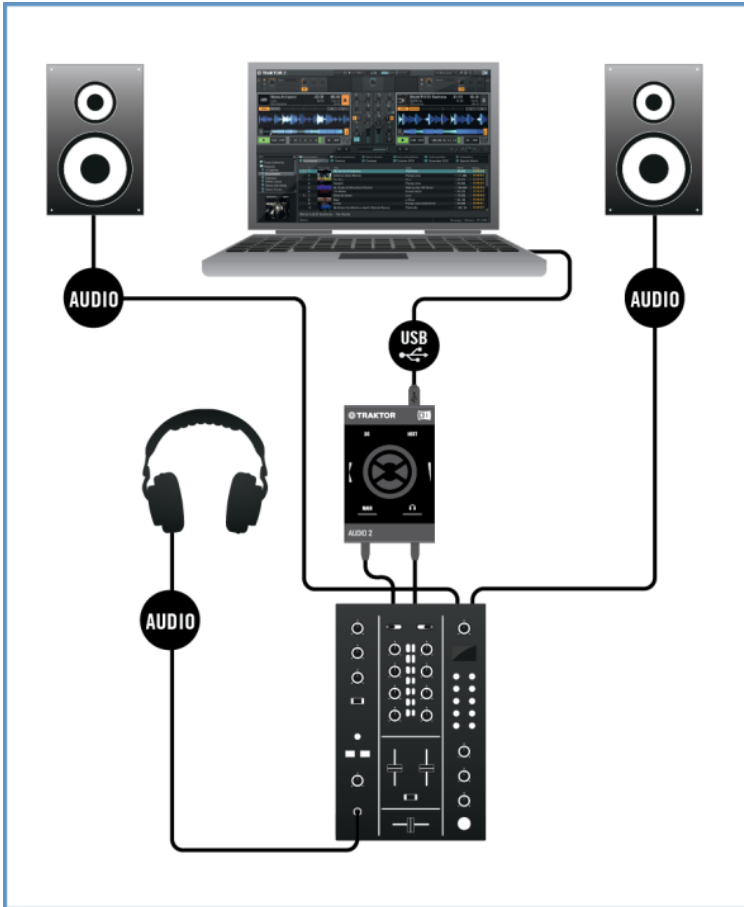


Setup overview of using TA2 in Internal Mixer Mode with an iOS device.

### 3.2.2 Overview of External Mixer Mode

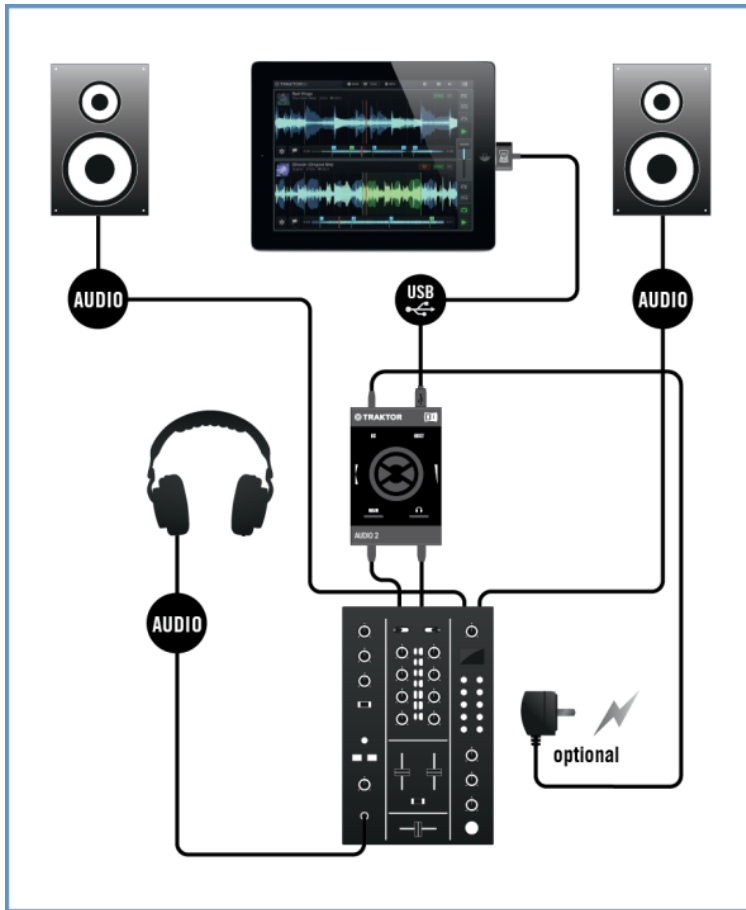
This use-case for the TRAKTOR AUDIO 2 is to interface TRAKTOR or TRAKTOR DJ with a traditional (external) DJ mixer. In this scenario, the **MAIN** and the Headphones output carries the signal from one of TRAKTOR's or TRAKTOR DJ's Decks. These signals are then fed to separate channels to the DJ mixer allowing the DJ to mix using familiar hardware.

The encoders on the TRAKTOR AUDIO 2 will be disabled in this mode to ensure the correct signals are sent to the DJ mixer channels. The following image shows the TRAKTOR AUDIO 2 connected to a computer used in External Mixer Mode:



Setup overview of using TA2 in External Mixer Mode with a computer.

The following image shows the TRAKTOR AUDIO 2 connected to an iOS device used in External Mixer Mode.



Setup overview of using TA2 in External Mixer Mode with an iOS device.

## 4 Using TRAKTOR AUDIO 2 with Your Computer

This section provides you with information on how to set up your TRAKTOR AUDIO 2 audio interface with your computer, both for Internal Mixer Mode and External Mixer Mode. Before connecting the devices and setting up your TRAKTOR AUDIO 2 here are some points to be aware of:

- When using TRAKTOR on a Windows system, make sure that you have updated TRAKTOR to the latest software version. For this, please follow the instructions in the TRAKTOR Set-up Guide.
- The TA2 may not work properly when connected to a USB hub. Connect it directly to a USB port on your computer.



The TA2—in combination with a power amplifier, speakers, or headphones—can produce sounds in decibel ranges that may cause hearing damage. Make sure the volume on your amplifier is turned down before you begin playing music. Then, gradually increase the volume to the desired level. Similarly, keep your headphones off until the volume is set correctly.

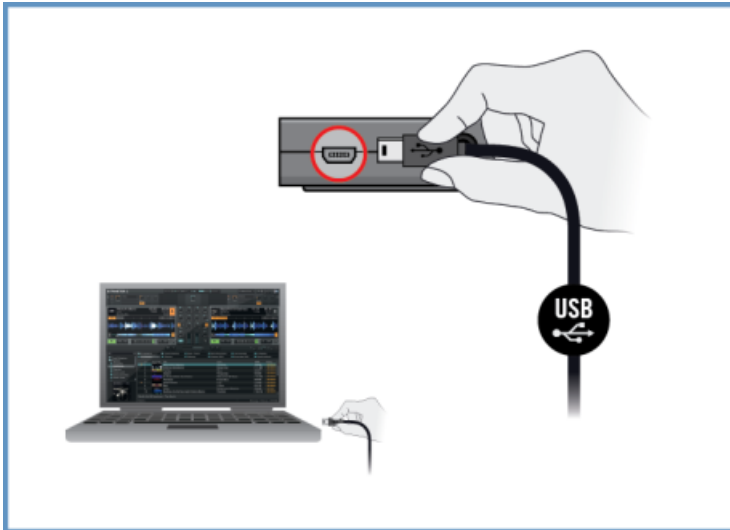
### 4.1 Setting up Your System for Internal Mixer Mode

This section will guide you to set up your TA2 for using in Internal Mixer Mode with your computer. If you want to set up your TA2 for using in External Mixer Mode, proceed with section [↑4.2, Setting up Your System for External Mixer Mode](#).

### 4.1.1 Connecting TRAKTOR AUDIO 2 to Your Computer

To connect the TRAKTOR AUDIO 2 to your computer:

1. Connect the Mini USB connector of the supplied Mini USB cable to the Mini USB socket on the rear panel of your TRAKTOR AUDIO 2.
2. Connect the “computer end” of the Mini USB cable to an available USB port on your computer.



#### Windows Users Only: Completing the Device Driver Installation

Upon detection of the new hardware, Windows completes the device driver installation:

- A message reading [Installing device driver software](#) will be displayed.
- After device driver installation has finished, Windows will display “[Your devices are ready to use.](#)”

### 4.1.2 Connecting Headphones to Your TRAKTOR AUDIO 2

To connect your headphones to the TRAKTOR AUDIO 2:

- ▶ Connect your headphones to the Headphones output socket on the front panel of the TRAKTOR AUDIO 2.

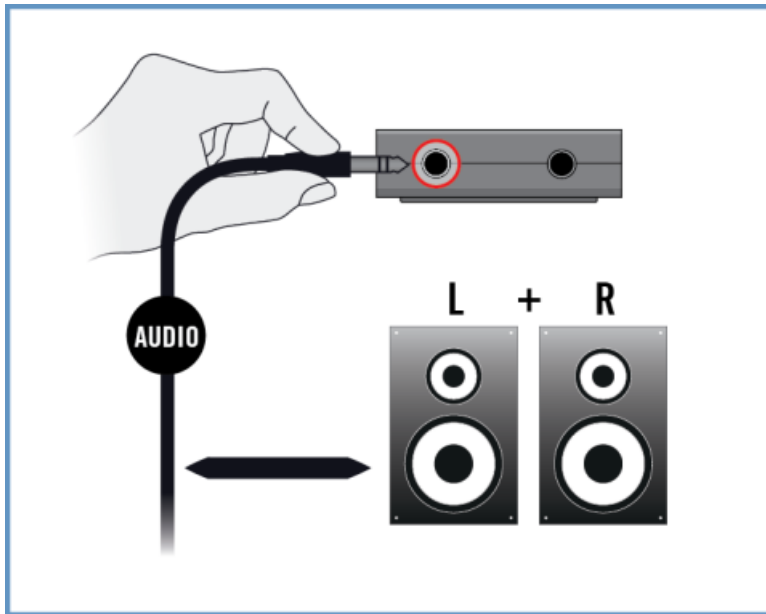


### 4.1.3 Connecting an Amplification System to Your TRAKTOR AUDIO 2

To connect your power amplifier or active speakers to the TRAKTOR AUDIO 2:

1. Switch off your amplification system.

2. Connect your amplification system to the **MAIN** output socket on the front panel of the TRAKTOR AUDIO 2 using an appropriate cable.



#### 4.1.4 Final Preparations in TRAKTOR

To configure the TRAKTOR software for Internal Mixer Mode, proceed as follows:

1. Start TRAKTOR.
2. Open the TRAKTOR Preferences dialog under the Preferences Icon in the top-left corner of the TRAKTOR window.

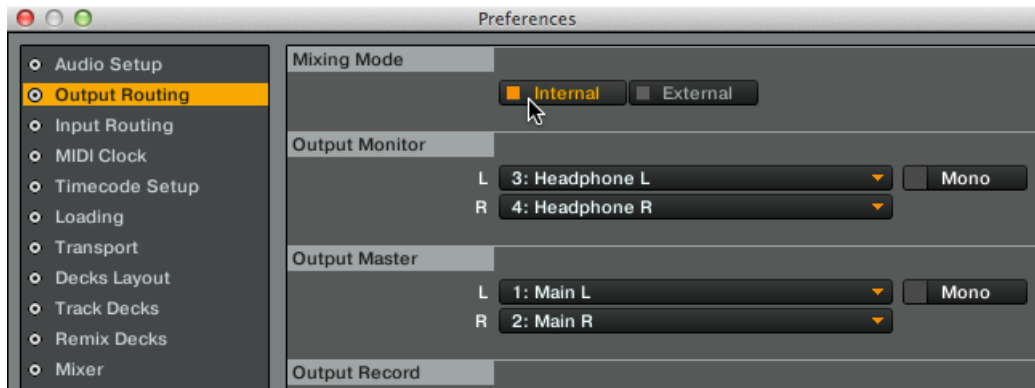


3. Select the **Audio Setup** tab.

4. In the **Audio device** drop-down menu ensure that *Traktor Audio 2 MK2 (Traktor Audio 2 MK2 (ASIO) on Windows)* is selected.



5. Select the **Output Routing** tab.
6. In the **Mixing Mode** section ensure **Internal** is selected to enable the Internal Mixer Mode. Decks A and B will be automatically configured to output their signal into the TA2's corresponding channels.



7. Click on **Close** button.
- TRAKTOR is now enabled for Internal Mixer Mode. You are now ready to load some tracks in TRAKTOR and start mixing in the software!



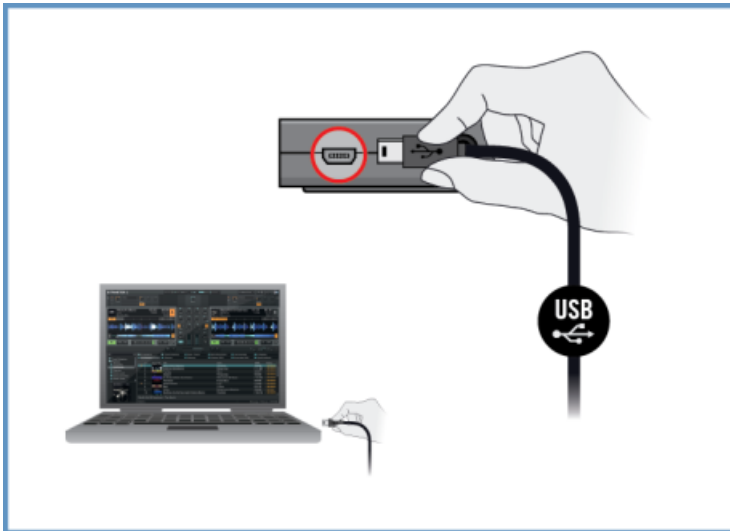
## 4.2 Setting up Your System for External Mixer Mode

This section will guide you through the set up of your TA2 for using it in External Mixer Mode with your computer. If you want to set up your TA2 for using in Internal Mixer Mode, proceed with section [↑4.1, Setting up Your System for Internal Mixer Mode](#).

### 4.2.1 Connecting TRAKTOR AUDIO 2 to Your Computer

To connect the TRAKTOR AUDIO 2 to your computer:

1. Connect the Mini USB connector of the supplied Mini USB cable to the Mini USB socket on the rear panel of your TRAKTOR AUDIO 2.
2. Connect the “computer end” of the Mini USB cable to an available USB port on your computer.



#### Windows Users Only: Completing the Device Driver Installation

Upon detection of the new hardware, Windows completes the device driver installation:

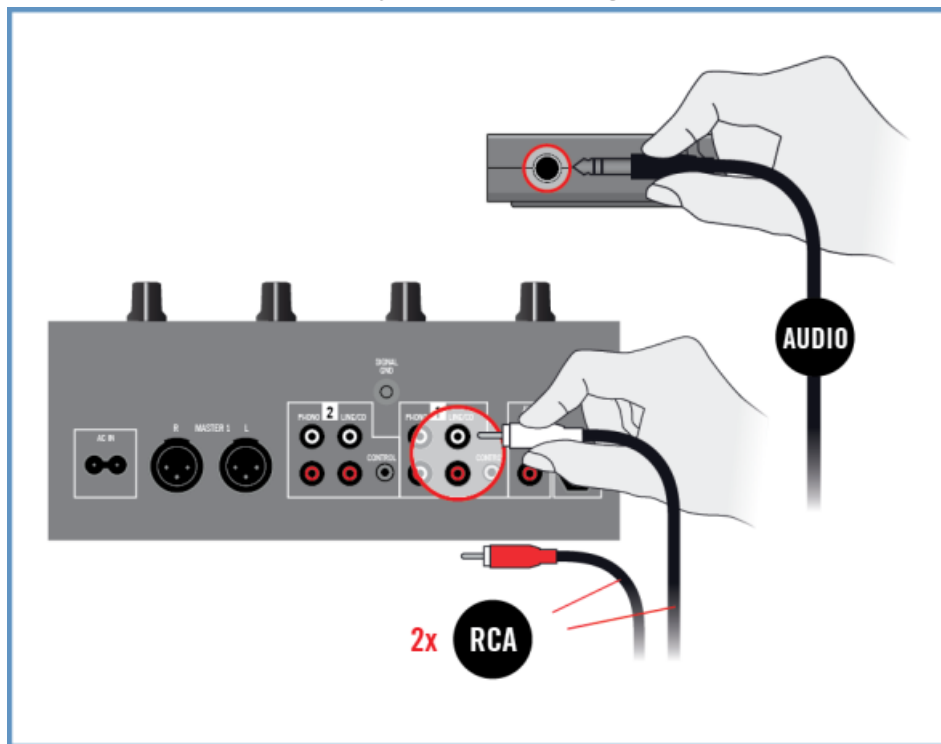
- A message reading [Installing device driver software](#) will be displayed.

- After device driver installation has finished, Windows will display “Your devices are ready to use.”

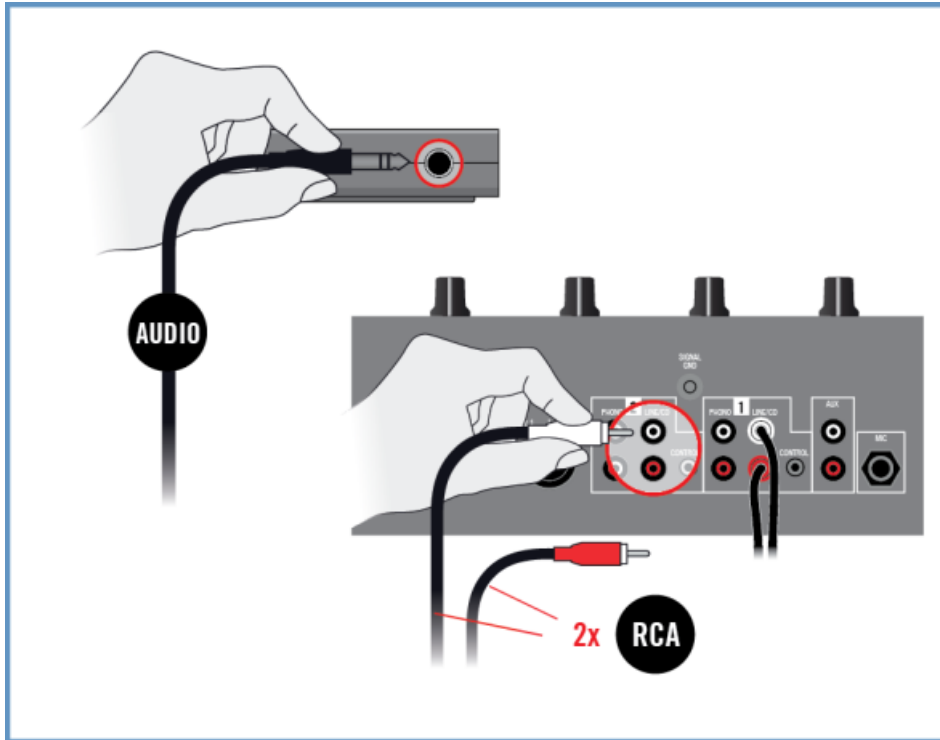
## 4.2.2 Connecting TRAKTOR AUDIO 2 to Your DJ Mixer

To connect your TRAKTOR AUDIO 2 to your mixer:

1. Switch off your DJ Mixer.
2. Connect the **MAIN** output on the front panel of the TRAKTOR AUDIO 2 to the inputs of Line/CD channel of deck A on your DJ mixer using a stereo 1/8"-to-RCA cable.



3. Connect the Headphones output on the front panel of the TRAKTOR AUDIO 2 to the inputs of Line/CD channel of deck B on your DJ mixer using a stereo 1/8"-to-RCA cable.



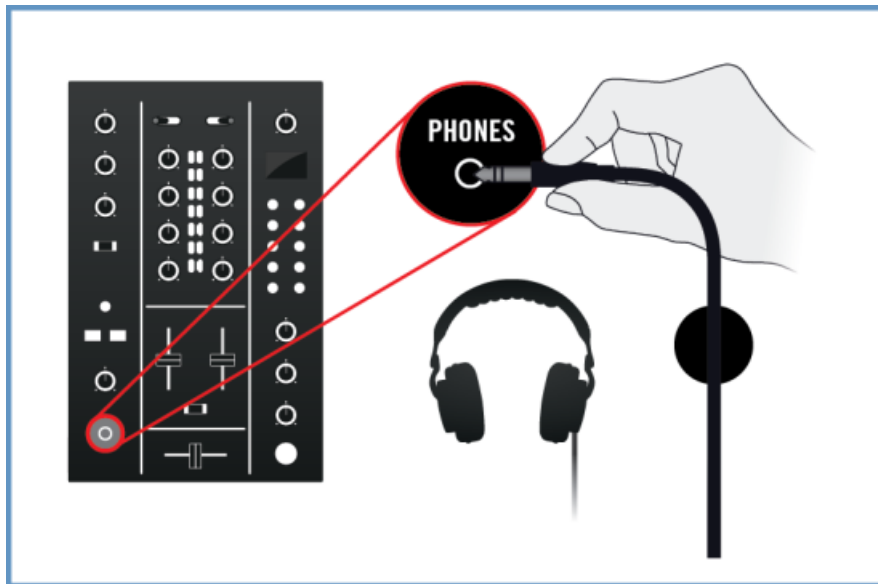
### 4.2.3 Connecting Headphones to Your DJ Mixer



Before putting on headphones, always make sure the headphone volume control of your DJ mixer is set to minimum.

To connect your headphones to the DJ mixer:

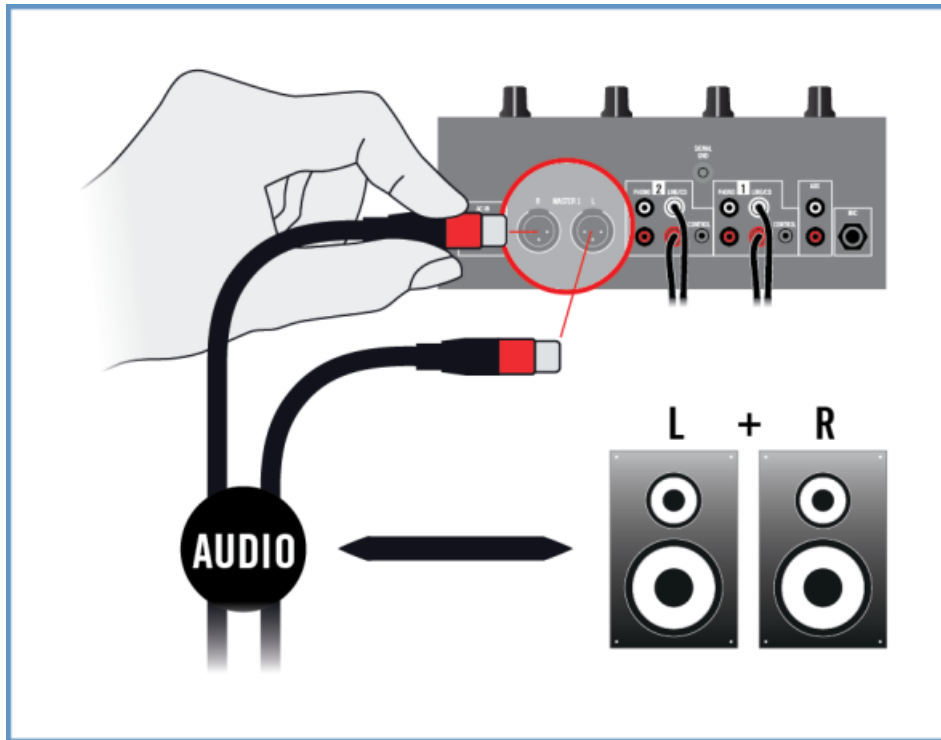
- ▶ Connect your headphones to your DJ mixer's headphones socket (most often labeled "Phones" or "Headphones").



### 4.2.4 Connecting an Amplification System to Your DJ Mixer

To connect your amplification system or a pair of active speakers to your DJ mixer:

- ▶ Connect the Main (or Master) outputs of your DJ mixer to the inputs of your amplification system using appropriate cables.



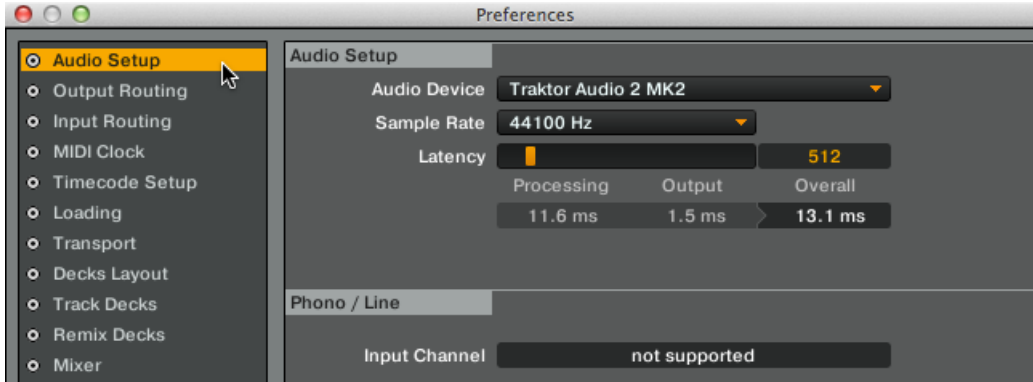
#### 4.2.5 Final Preparations in TRAKTOR

To configure the TRAKTOR software for External Mixer Mode, proceed as follows:

1. Start TRAKTOR.
2. Open the TRAKTOR Preferences dialog under the Preferences Icon in the top-left corner of the TRAKTOR window.



3. Select the [Audio Setup](#) tab.
4. In the [Audio device](#) drop down menu, ensure that *Traktor Audio 2 MK2 (Traktor Audio 2 MK2 (ASIO) on Windows)* is selected.



5. Select the [Output Routing](#) tab.
6. In the [Mixing Mode](#) section select [External](#) to enable the External Mixer Mode. Decks A and B will be automatically configured to output their signal into the TA2's corresponding channels.



7. Click on [Close](#) button.
- TRAKTOR is now enabled for External Mixing Mode. You are now ready to load some tracks in TRAKTOR and start mixing with your TA2 and your DJ mixer!

## 5 Using TRAKTOR AUDIO 2 with Your iOS Device

This section provides you with information on how to set up your TRAKTOR AUDIO 2 audio interface with your iOS device, both for using in Internal Mixer Mode and External Mixer Mode. Before connecting the devices, and setting up your TRAKTOR AUDIO 2, here are some points to be aware of:

- Ensure that you have already downloaded the latest TRAKTOR DJ app before connecting the TA2 to your iOS device. You can download TRAKTOR DJ from the iTunes App Store. iOS devices that currently facilitate the running of TRAKTOR DJ, see the TRAKTOR DJ specifications section of the Native Instruments website: <http://www.native-instruments.com/en/products/traktor/traktor-for-ios/traktor-dj/>.



Please note: To connect the TRAKTOR AUDIO 2 audio interface to an iPhone 5, iPad mini, 4th generation iPad, or newer iOS device, a Lightning to 30-pin adapter (sold separately) is required.

- The TA2 will receive power from the iOS device in order to function. However, especially when used with TRAKTOR DJ, this can put a heavy load on the iOS device's battery – the iOS device could discharge the battery within an hour or two. In order to allow longer mixing sessions, the optional power supply can be connected to the back of the TA2. This will power the TA2 and will also provide charging power to the connected iOS device.



The TA2—in combination with a power amplifier, speakers, or headphones—can produce sounds in decibel ranges that may cause hearing damage. Make sure the volume on your amplifier is turned down before you begin playing music. Then, gradually increase the volume to the desired level. Similarly, keep your headphones off until the volume is set correctly.

## 5.1 Setting up Your System for Internal Mixer Mode

This section will guide you to set up your TA2 for using in Internal Mixer Mode with your iOS device. If you want to set up your TA2 for using in External Mixer Mode, proceed with section [↑5.2, Setting up Your System for External Mixer Mode](#).

### 5.1.1 Connecting TRAKTOR AUDIO 2 to Your iOS Device



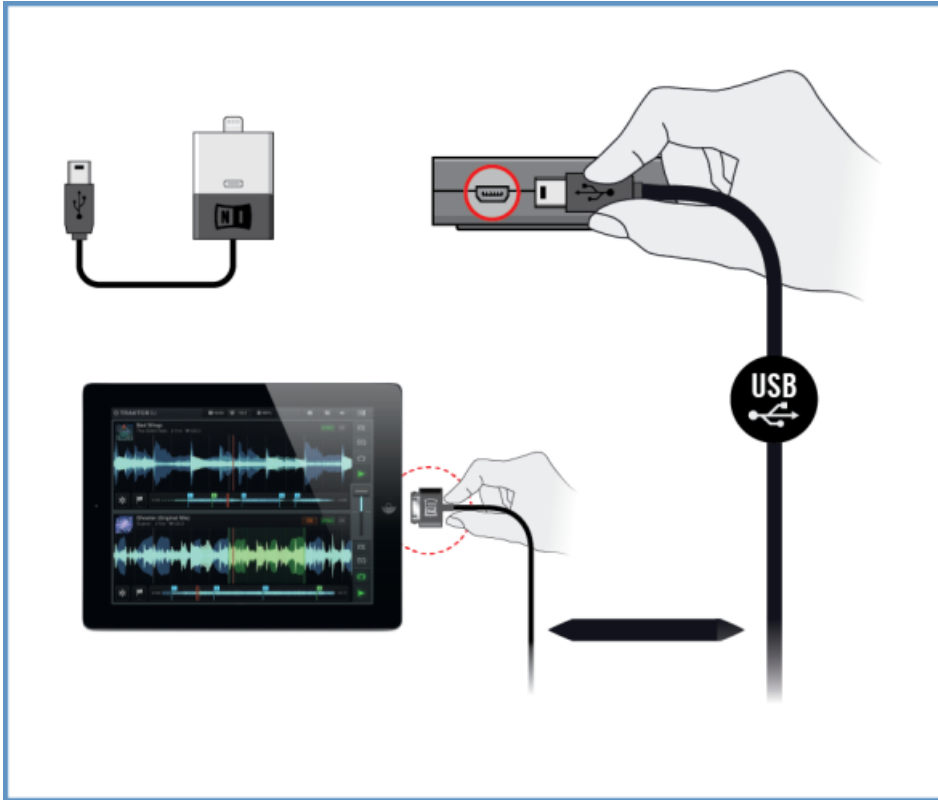
If you intend to use the optional power supply, connect it to the TRAKTOR AUDIO 2 and to a power outlet before starting TRAKTOR DJ. Connecting the power supply during operation may result in a temporary audio drop out.

To connect the TRAKTOR AUDIO 2 to your iOS device:

1. Connect the mini USB connector of the supplied Native Instruments iOS device connection cable to the Mini USB socket on the rear panel of your TRAKTOR AUDIO 2.



2. Connect the 30-pin connector of the Native Instruments iOS device connection cable to the Dock Connector on your iOS device. If your iOS device has a Lightning connector, use a Lightning to 30-pin adapter to connect the cable.



### 5.1.2 Connecting Headphones to Your TRAKTOR AUDIO 2

To connect your headphones to the TRAKTOR AUDIO 2:

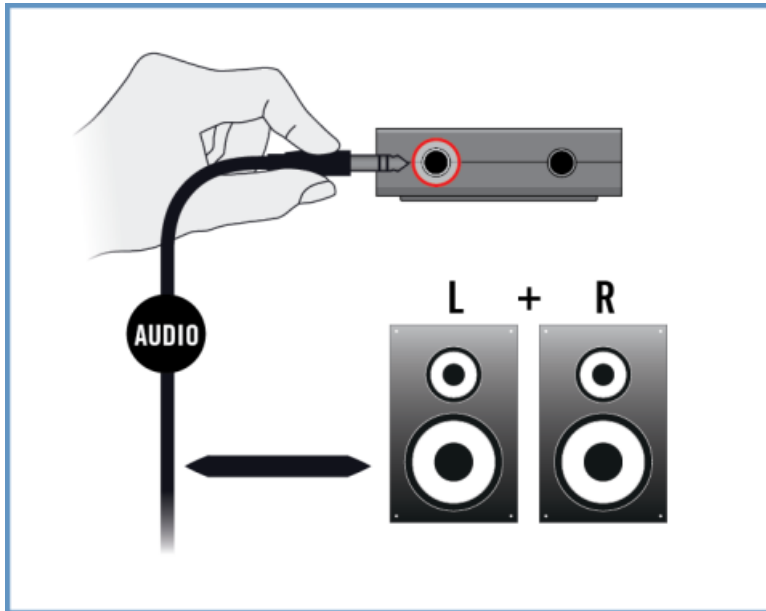
- ▶ Connect your headphones to the TRAKTOR AUDIO 2's Headphones output socket.



### 5.1.3 Connecting an Amplification System to Your TRAKTOR AUDIO 2

To connect your power amplifier or active speakers to the TRAKTOR AUDIO 2:

1. Switch off your amplification system.
2. Connect your amplification system to the **MAIN** output socket on the front panel of the TRAKTOR AUDIO 2 using an appropriate cable.



### 5.1.4 Final Preparations in TRAKTOR DJ

The Internal Mixer Mode is set by default when using TRAKTOR DJ in conjunction with the TRAKTOR AUDIO 2 audio interface. The Main Mix and Headphone Cue will be automatically configured to output from the labeled sockets on TA2. Further configuration of TRAKTOR DJ is not required.



If you use the optional power supply, ensure it is connected to the TRAKTOR AUDIO 2 and to a power outlet.

To start mixing with TRAKTOR DJ and the TRAKTOR AUDIO 2 in Internal Mixer Mode:

1. Power up your iOS device.
  2. Launch the TRAKTOR DJ app on your iOS device by tapping its icon. TRAKTOR DJ will automatically be configured with the TA2 in Internal Mixer Mode.
- You are now ready to load some tracks in TRAKTOR DJ's Decks and start mixing!



Before putting on headphones, always make sure the headphone volume control is set to minimum! Then, while playing music, slowly increase the headphone volume until it reaches the desired listening level.

## 5.2 Setting up Your System for External Mixer Mode

This section will guide you to set up your TA2 for using in External Mixer Mode with your iOS device. If you want to set up your TA2 for using in Internal Mixer Mode, proceed with section [↑5.1, Setting up Your System for Internal Mixer Mode](#).

### 5.2.1 Connecting TRAKTOR AUDIO 2 to Your iOS Device

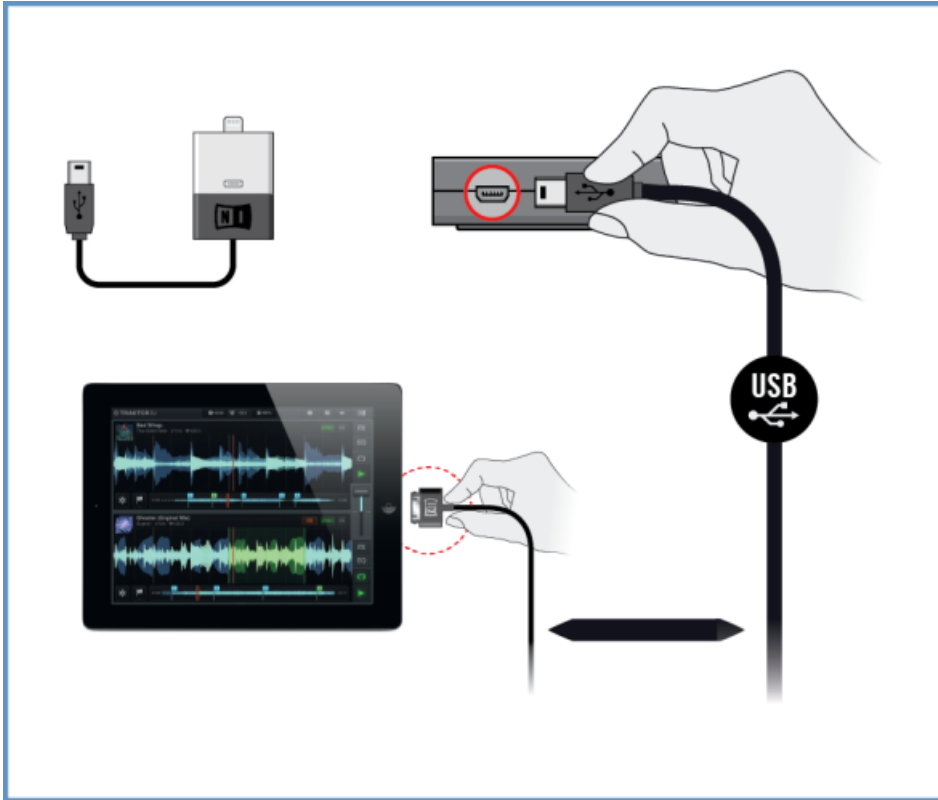


If you intend to use the optional power supply, connect it to the TRAKTOR AUDIO 2 and to a power outlet before starting TRAKTOR DJ. Connecting the power supply during operation may result in a temporary audio drop out.

To connect the TRAKTOR AUDIO 2 to your iOS device:

1. Connect the Mini USB connector of the supplied Native Instruments iOS device connection cable to the Mini USB socket on the rear panel of your TRAKTOR AUDIO 2.

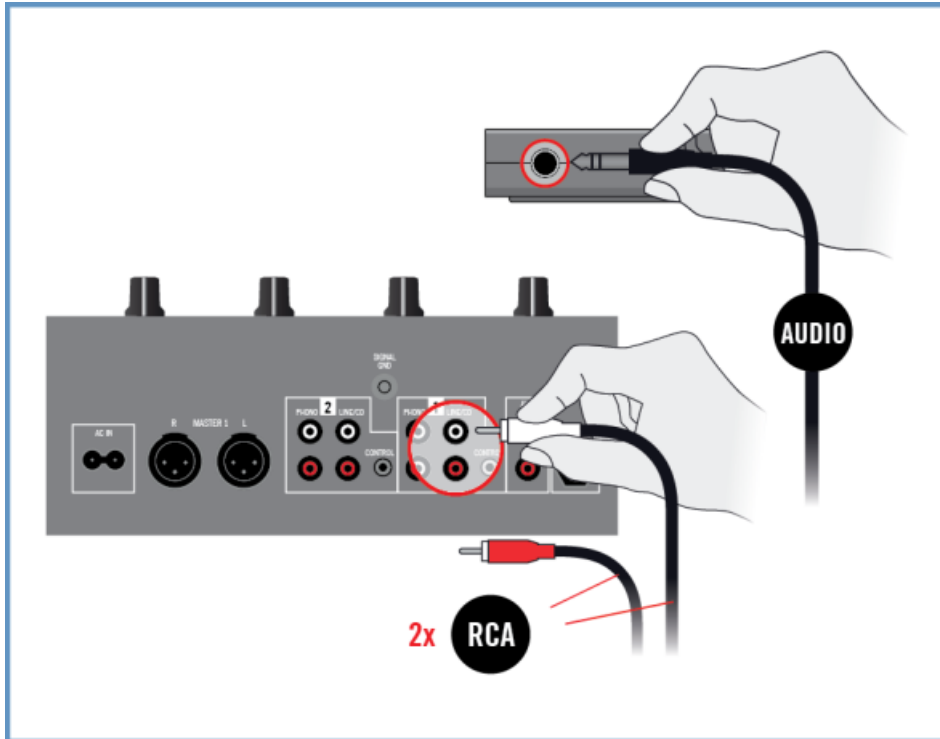
2. Connect the 30-pin connector of the Native Instruments iOS device connection cable to the Dock Connector on your iOS device. If your iOS device has a Lightning connector, use a Lightning to 30-pin adapter to connect the cable.



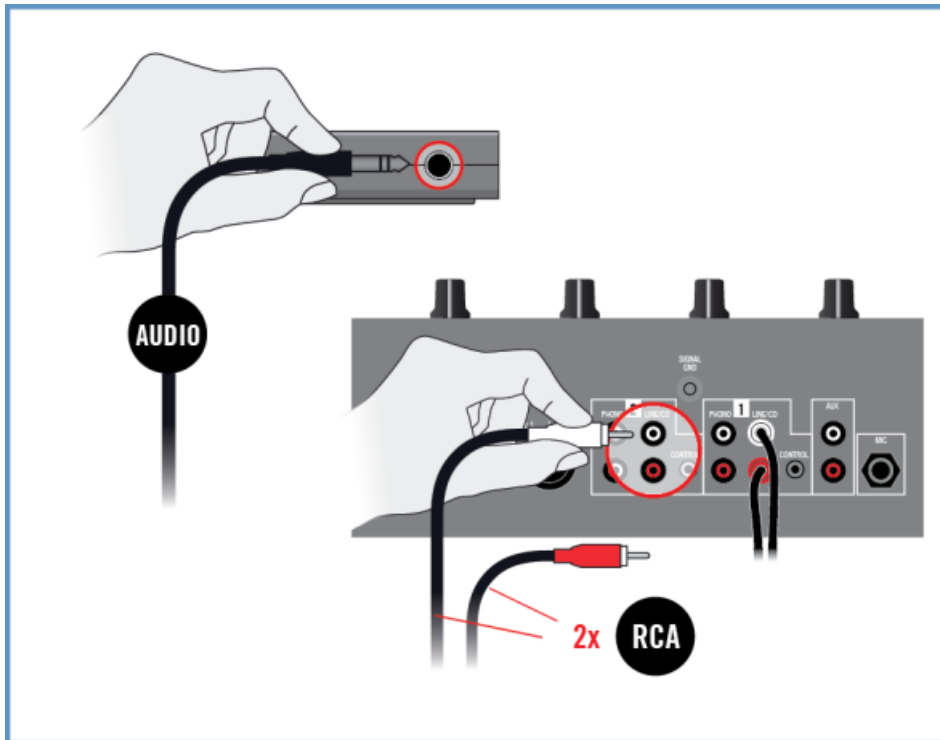
## 5.2.2 Connecting TRAKTOR AUDIO 2 to Your DJ Mixer

To connect your TRAKTOR AUDIO 2 to your DJ mixer:

1. Switch off your DJ Mixer.
2. Connect the **MAIN** output socket on the front panel of the TRAKTOR AUDIO 2 to the inputs of Line/CD channel of deck A on your DJ mixer using a stereo  $\frac{1}{8}$ "-to-RCA cable.



3. Connect the Headphones output socket on the front panel of the TRAKTOR AUDIO 2 to the inputs of Line/CD channel of deck B on your DJ mixer using a stereo 1/8"-to-RCA cable.



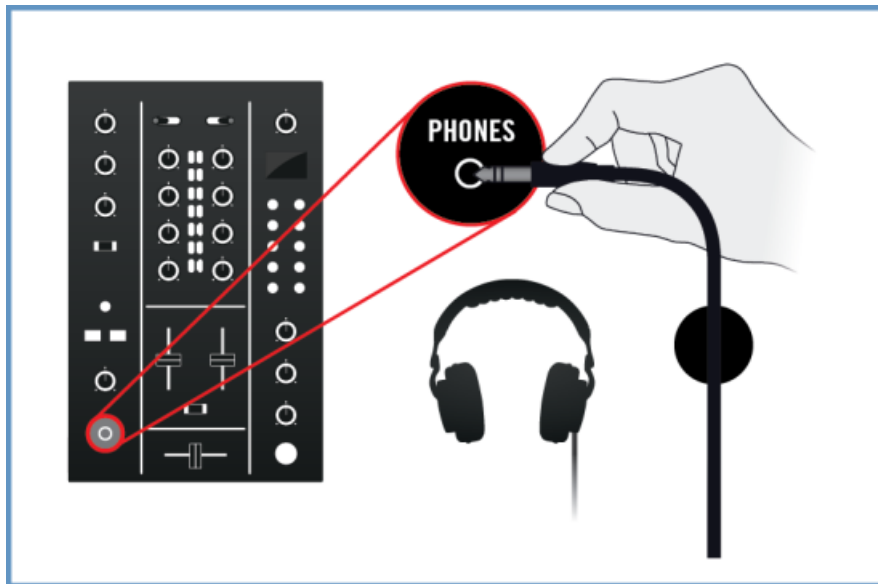
### 5.2.3 Connecting Headphones to Your DJ Mixer



Before putting on headphones, always make sure the headphone volume control of your DJ mixer is set to minimum.

To connect your headphones to the DJ mixer:

- ▶ Connect your headphones to your mixer's headphones socket (most often labeled "Phones" or "Headphones").



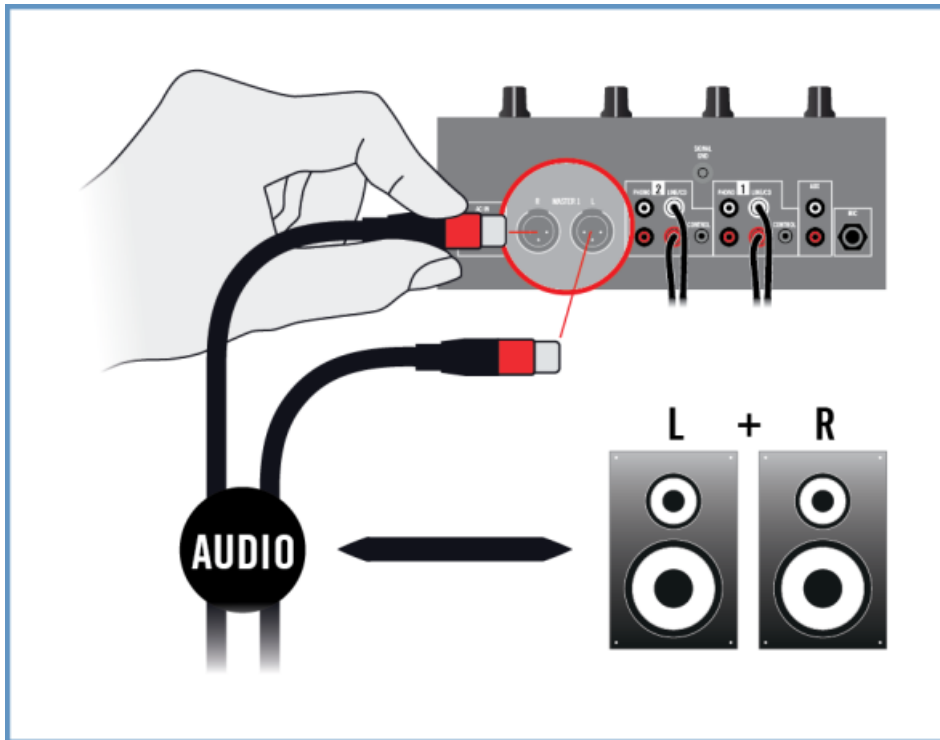
### 5.2.4 Connecting an Amplification System to Your DJ Mixer

To connect your power amplifier or active speakers to your DJ mixer:

1. Switch off your amplification system.



2. Connect the Main (or Master) outputs of your DJ mixer to the inputs of your amplification system using appropriate cables.



### 5.2.5 Final Preparations in TRAKTOR DJ

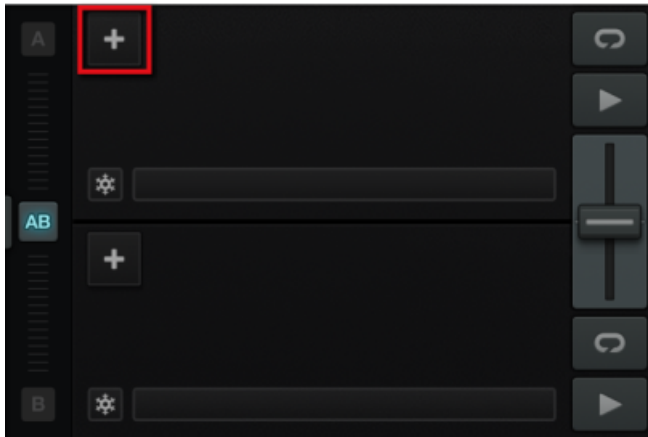


If you use the optional power supply, ensure it is connected to the TRAKTOR AUDIO 2 and to a power outlet.

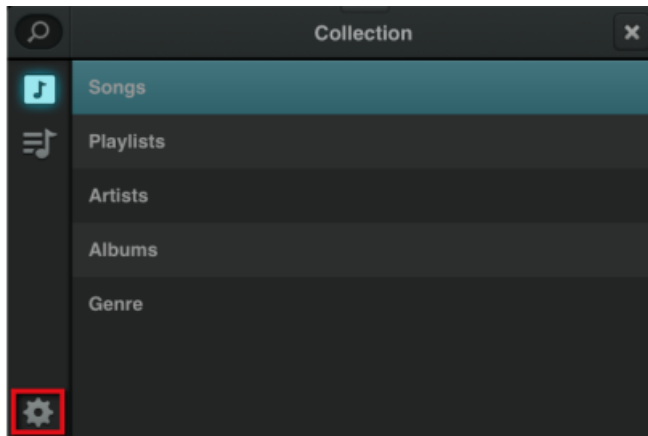
To start mixing with TRAKTOR DJ and the TRAKTOR AUDIO 2 in External Mixer Mode it is recommended to follow the order below when switching on your devices and making final settings:

1. Turn on your iOS device.
2. Launch the TRAKTOR DJ app on your iOS device by tapping its icon.

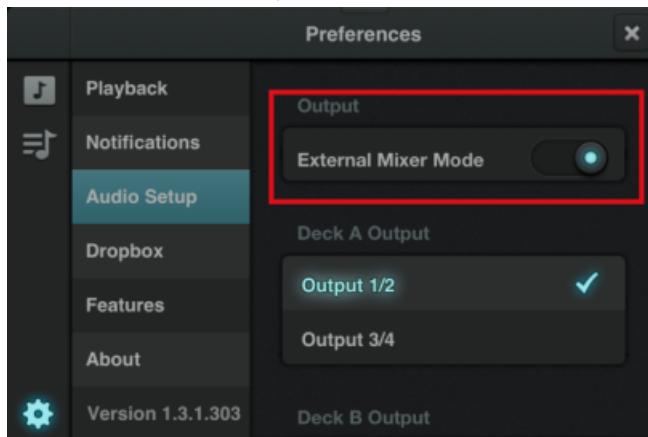
3. In TRAKTOR DJ open the Browser menu by tapping the Plus Icon either of Deck A or B.



4. Open the preferences dialog by tapping the preferences icon.



5. Select the [Audio Setup](#) tab and enable [External Mixer Mode](#) in the [Output](#) option



6. Close the preferences menu.
  7. Turn on your DJ mixer.
  8. Turn on the amplification system.
- You are now ready to load some tracks in TRAKTOR DJ's Decks and start mixing with your external DJ mixer!



When TRAKTOR DJ is running and you have loaded tracks to TRAKTOR DJ's Decks, gradually raise the volume controls of your amplification system while music is playing until a comfortable listening level is reached.

## 6 Using TRAKTOR AUDIO 2 as Your Computer's Default Audio Output Device

In order for the TRAKTOR AUDIO 2 to operate as your computer's default audio output device, you will need to select it within the system's audio preferences. In the following sections, you will learn how to set up the TRAKTOR AUDIO 2 as your computer's default audio output device. For information on using the TRAKTOR AUDIO 2 as your music software's audio output device, see section [↑6.7, Using TRAKTOR AUDIO 2 as Audio Output Device with Your Music Software](#).

Before selecting the TA2 as your computer's default audio output device here are some points to be aware of:

- When using TRAKTOR on a Windows system, make sure that you have installed the TA2 hardware driver with the latest TRAKTOR software, or you download and install the TA2 hardware driver as described in the following section [↑6.1, Driver Software Installation on Windows](#), before you connect the TA2 to your computer.
- The TA2 may not work properly connected to a USB hub. Connect it directly to a USB port on your computer.
- It is recommended to connect computer speakers to the **MAIN** output and headphones to the Headphones output sockets of TA2 since the TA2 Headphone output will automatically monitor the Main signal by default.



By default, the audio sent to the **MAIN** output will also be sent to the headphone output as well. This makes it much easier to use TA2 because you can leave headphones and computer speakers connected simultaneously and never have to make any changes to the operating system's audio settings to use either of them. This is because the Cue Mix encoder is set so that the Headphone output monitors the Main signal by default. You can therefore adjust the volume of the computer speakers using the volume control on the speakers themselves. Then, adjust the headphone volume independently with the Headphones Volume Encoder on the TA2.



The TA2—in combination with a power amplifier, speakers, or headphones—can produce sounds in decibel ranges that may cause hearing damage. Make sure the volume on your amplifier is turned down before you begin playing music. Then, gradually increase the volume to the desired level. Similarly, keep your headphones off until the volume is set correctly.

## 6.1 Driver Software Installation on Windows

This section describes the process of installing the TRAKTOR AUDIO 2 hardware driver software on Windows in case you do not intend to install the TRAKTOR software. The TRAKTOR AUDIO 2 does not require a dedicated driver under Mac OS X. If you intend to use your TRAKTOR AUDIO 2 with a Mac computer skip to section [↑6.2, Connecting TRAKTOR AUDIO 2 to Your Computer](#). For Installing the TRAKTOR AUDIO 2 driver software on Windows continue with this section first. Before you proceed, here are some points to be aware of:

- **Make sure you have downloaded the driver software installation program** to your computer by following the instructions on the registration page: [www.native-instruments.com/go-ta2](http://www.native-instruments.com/go-ta2)  
Alternatively, you can get it from the following webpage: [TRAKTOR AUDIO 2](#)
- Please **carefully review the installer screens** and the suggested installation paths in order to avoid that any unwanted folders are created on your hard disk.
- **Moving any folders** related to Native Instruments software **after installation is not recommended**. Future software updates rely on the directory locations set during initial installation.

In order for the TRAKTOR AUDIO 2 to work properly with your computer, the following two programs are automatically installed on your system during the driver software installation process:

- The **TRAKTOR AUDIO 2 driver**. This handles the communication between the audio interface and your computer.
- The **Control Panel** software: In Windows, the Control Panel software allows you to adjust performance settings, preamp settings, and to perform diagnostics.

## Locate and Start the Driver Software Installation Program



It may be necessary to disable your anti-virus software during installation, please refer to the software's own documentation for further information.



Make sure to run the installer using administrator privileges: right click on the installer file to open the shortcut menu and select *Run as administrator*.

To install the TRAKTOR AUDIO 2 driver software on Windows:

1. Locate and unpack the downloaded installer package file on your computer.
2. Double-click the installer file named **Traktor Audio 2 MK2 Driver Setup PC.exe** to start the installation procedure.
3. Follow the on-screen instructions.

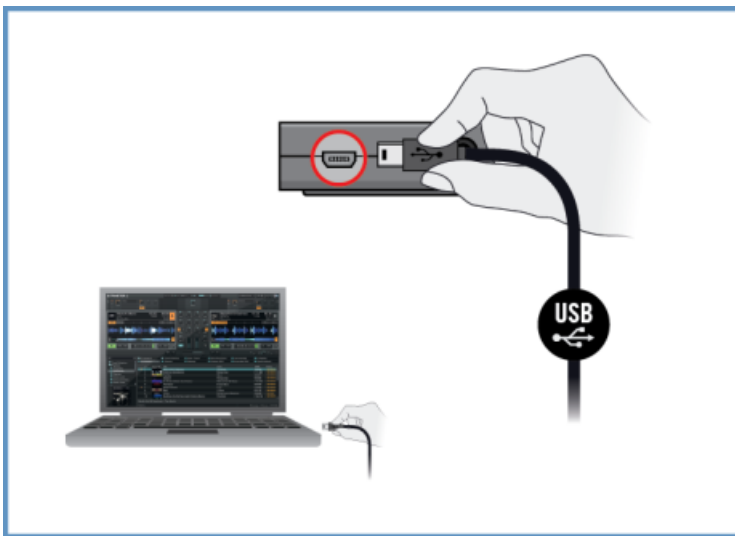
Once the installation procedure is finished continue reading with section [↑6.2, Connecting TRAKTOR AUDIO 2 to Your Computer](#).

## 6.2 Connecting TRAKTOR AUDIO 2 to Your Computer

To connect the TRAKTOR AUDIO 2 to your computer:

1. Connect the Mini USB connector of the supplied Mini USB cable to the Mini USB socket on the rear panel of your TRAKTOR AUDIO 2.

2. Connect the “computer end” of the Mini USB cable to an available USB port on your computer.



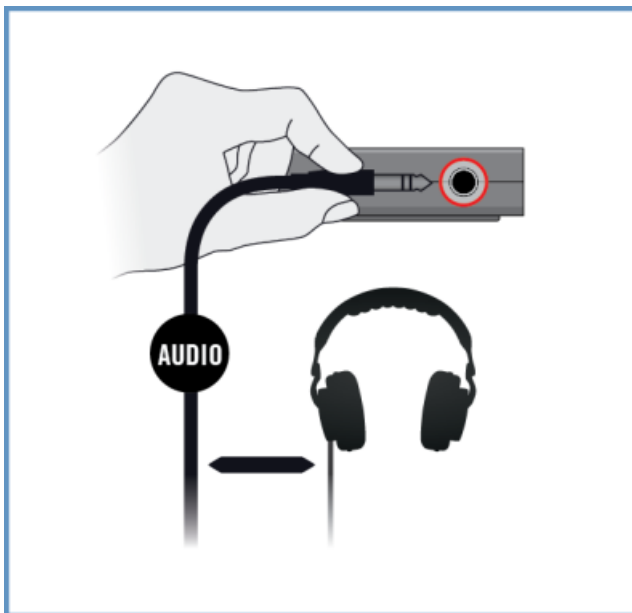
Upon detection of the new hardware, Windows completes the device driver installation:

- A message reading [Installing device driver software](#) will be displayed.
- After device driver installation has finished, Windows will display “[Your devices are ready to use.](#)”

## 6.3 Connecting Headphones to Your TRAKTOR AUDIO 2

To connect your headphones to the TRAKTOR AUDIO 2:

- ▶ Connect your headphones to the Headphones output socket on the front panel of the TRAKTOR AUDIO 2.



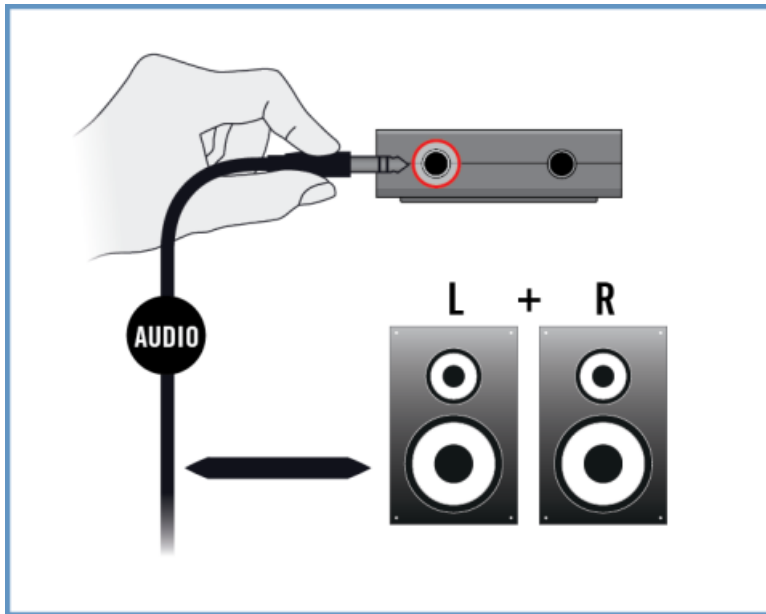
## 6.4 Connecting an Amplification System to Your TRAKTOR AUDIO 2

To connect your power amplifier or active speakers to the TRAKTOR AUDIO 2:

1. Switch off your amplification system.



2. Connect your amplification system to the **MAIN** output socket on the front panel of the TRAKTOR AUDIO 2 using an appropriate cable.



## 6.5 Final Steps on Mac OS X

1. Open the System Preferences under the gray Apple Icon menu in the top left corner of your screen.
  2. In the *Hardware* category (second row from top), select *Sound*.
  3. In the *Sound* control panel, select the *Output* tab.
  4. Choose **TRAKTOR AUDIO 2 MK2** from the list of available soundcards.
  5. Close the panel.
- TRAKTOR AUDIO 2 is now selected as the default audio output device.

## 6.6 Final Steps on Windows

1. Open *Start > Control Panel > Hardware and Sound > Sound*.
  2. In the [Sound Control Panel](#), select the [Playback](#) tab.
  3. Choose the output channel [Traktor Audio2 MK2 Main](#).
  4. Click [Set Default](#).
  5. Click [OK](#) to confirm your selection and close the window.
- TRAKTOR AUDIO 2 is now selected as the default audio output device.

## 6.7 Using TRAKTOR AUDIO 2 as Audio Output Device with Your Music Software

Before using the TRAKTOR AUDIO 2 with music production or DJ software, here are a few notes to be aware of:

- When using TRAKTOR with your music software on a Windows system, make sure that you either have installed the TA2 hardware driver with the latest TRAKTOR software, or you download and install the TA2 hardware driver as described in section [↑6.1, Driver Software Installation on Windows](#), before you connect the TA2 to your computer.
- You will need to set it up as your software's output device. Most music production and DJ programs provide direct access to the soundcard properties in the audio and MIDI setup section of their preferences dialog.
- It is recommended to use the TA2 Main output in your operating system software since the TA2 Headphone output will automatically monitor the Main signal by default.



If you intend to set up your music software such that you can send a unique signal to the headphones, choose the TA2 Headphone output. In order to do this you must rotate the Cue Mix encoder fully towards the rear of the TA2. This will then cause the Headphones output to monitor the discrete Headphone signal from your music software.

Please refer to the documentation of your music production or DJ software for information on how to configure audio and MIDI interfaces.

## 7 Advanced Configuration of Your TRAKTOR AUDIO 2

### On Windows

All advanced configuration settings on Windows can be accessed from the Control Panel software, which was installed on your computer during the TRAKTOR software installation or the driver software installation procedure. You should open the Control Panel once you have installed the drivers, connected the hardware to your computer, and set up the interface as your default audio output device (see section [↑6, Using TRAKTOR AUDIO 2 as Your Computer's Default Audio Output Device](#)). In this section, you will learn about the Control Panel and what you can do with it. Proceed with section [↑7.1, Advanced Configuration on Windows \(Control Panel\)](#).



If you experience problems with your setup, please refer to the Audio Troubleshooting Guide, which you can access from the [Information](#) section of the Control Panel's [Diagnostics](#) page, or open it directly from the software's documentation folder.

### On Mac OS X

On Mac OS X, the advanced audio and MIDI settings are accessed from the Mac OS X Audio MIDI Setup, located in the *Applications > Utilities* folder. Open the Audio MIDI Setup once you have connected the hardware to your computer and set up the interface as your default audio device (see section [↑6, Using TRAKTOR AUDIO 2 as Your Computer's Default Audio Output Device](#)).

Proceed with section [↑7.2, Advanced Configuration on Mac OS X](#).



If you experience problems with your setup, please refer to the Audio Troubleshooting Guide, which you can access directly from the software's documentation folder.

## 7.1 Advanced Configuration on Windows (Control Panel)

The Control Panel software allows you to change the driver's performance settings, monitor performance, and detect errors. To open the Control Panel:

- ▶ Navigate to *Start > All Programs > Native Instruments > TRAKTOR AUDIO 2 MK2 > TRAKTOR AUDIO 2 MK2 Control Panel*.

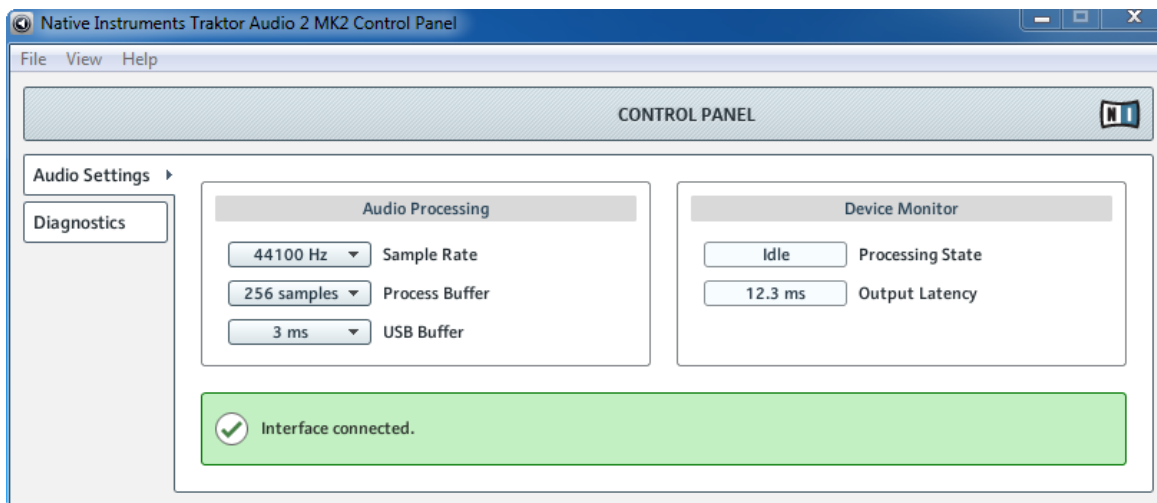
If you cannot find the Control Panel, the software is most likely not installed. In this case, please reinstall/install TRAKTOR or the driver software as described in section [↑6.1, Driver Software Installation on Windows](#).

On the left-hand side of the Control Panel, you find two tabs: [Audio Settings](#), and [Diagnostics](#):

- ▶ Click on the tabs to open the corresponding page of the Control Panel.

Proceed to sections [↑7.1.1, Audio Settings Page](#) and [↑7.1.2, Diagnostics Page](#) for more information on the Control Panel's pages.

## 7.1.1 Audio Settings Page

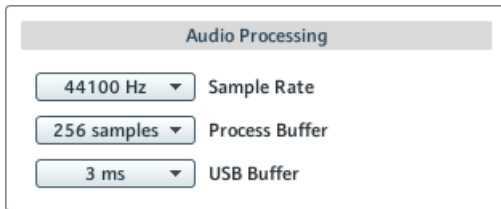


The Control Panel's Audio Settings page.

In the [Audio Settings](#) page, you can configure the audio latency and sample rate, and monitor the device's status.

The [Audio Settings](#) page consists of two sections: [Audio Processing](#) and [Device Monitor](#). See the following subsections for further information.

## Audio Processing Section



The Audio Processing section in the Audio Settings page of the Control Panel.

The [Audio Processing](#) section sets parameters for the analog-to-digital / digital-to-analog conversion done by your audio interface. It has two menus:

- **Sample Rate:** Choose a sample rate that is compatible with your music application and best suited to your computing power. A higher sample rate improves the audio quality, but also causes higher CPU load. By default, the sample rate is set to 44100 Hz (CD quality).

If you want to use multiple software clients simultaneously with the device, keep in mind they'll also have to share the same sample rate.

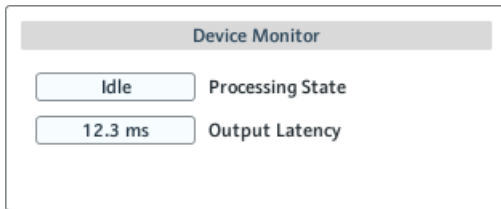
- **Process Buffer :** Lower the buffer size value for a quicker response time from your computer to audio software actions.



When converting audio information to digital and vice versa, the audio driver needs to store the data in buffer packages (audio buffers), which are then sent to and processed by the CPU. The higher the buffer size, the longer it takes for a signal to finally arrive at the output as audio. You might experience this as a delay between the time you hit a key on your computer or controller and when you actually hear the sound. This delay is called latency. A rule of thumb: lowering buffer size results in lower latency. However, there are more factors to latency than buffer size alone (e.g., CPU speed and RAM size). Start off with a higher buffer size setting and gradually decrease the value until you find the perfect balance between audio quality and system performance. If you experience crackling at the audio output, the chosen buffer size is very likely too low for your computer's CPU to handle considering that a lower buffer size causes higher CPU load.

- **USB Buffer:** Changing the USB Buffer size (Process Buffer) affects the ASIO and the WDM driver. Supported USB Buffers (in ms) are: 1, 2, 3, 4. Default USB Buffer: 3ms

## Device Monitor Section

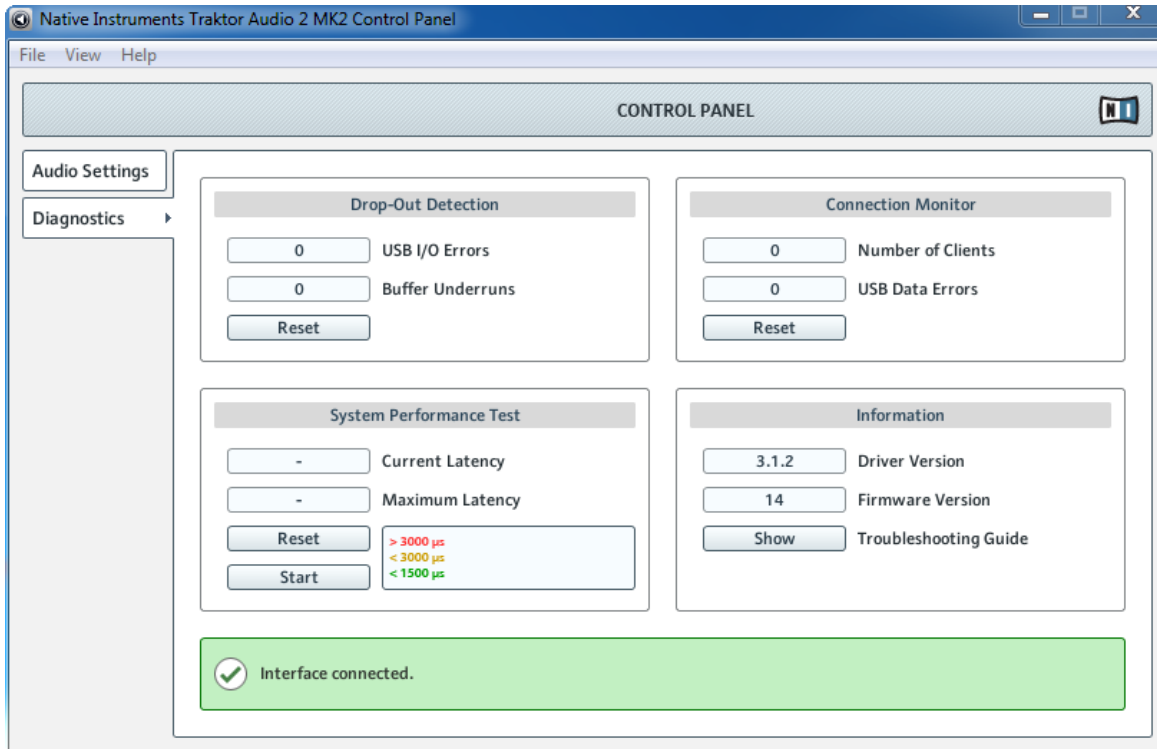


The Device Monitor section in the Audio Settings page of the Control Panel.

The [Device Monitor](#) section displays information about the audio interface's processing status and your system's output latency. It has two displays:

- [Processing State](#): The processing state monitor provides feedback on the current status of the device. There are three possible status messages:
  - [Idle](#): interface is connected, but no client delivers audio data.
  - [Streaming](#): driver is working and processing audio data.
  - [Panic](#): driver stopped streaming. Too many USB I/O errors occurred in the interface communication.
- [Output Latency](#): Shows the amount of output latency in milliseconds.

## 7.1.2 Diagnostics Page

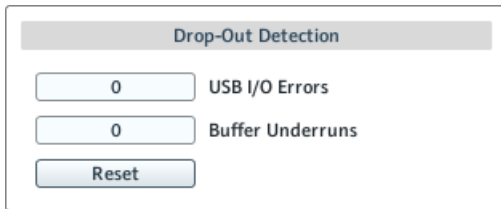


The Control Panel's Diagnostics page.

The [Diagnostics](#) page allows you to monitor performance and detect errors. The information provided in this page is primarily of interest to advanced users; however, in case of problems with the soundcard, you should refer to this page. The [Diagnostics](#) page consists of the four sections: [Drop-Out Detection](#); [Connection Monitor](#); [System Performance Test](#); and [Information](#). See the following subsections for further information on these sections.



## Drop-Out Detection Section

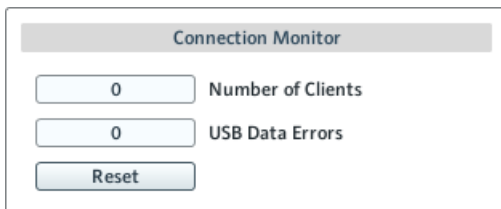


The Drop-Out Detection section in the Diagnostics page of the Control Panel.

The [Drop-Out Detection](#) section provides feedback on USB input/output and buffering errors. It has two displays and a button:

- [USB I/O Errors](#): provides feedback on USB input/output errors. A high [USB I/O Errors](#) count points to your system being overloaded.
- [Buffer Underruns](#): Buffer underruns occur when your computer isn't able to process an audio buffer in time. Reasons for underruns include too many ongoing background tasks or high CPU usage within a music program. Increasing the buffer size ([Process Buffer](#) parameter in the [Audio Processing](#) section of the [Audio Settings](#) page) will often prevent underruns.
- [Reset](#): A click on this button resets the error count.

## Connection Monitor Section

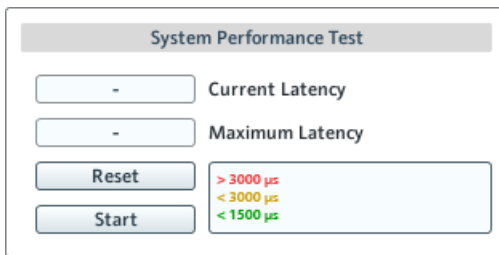


The Connection Monitor section in the Diagnostics page of the Control Panel.

The [Connection Monitor](#) section provides feedback on connected clients and USB data errors. It has two displays and a button:

- **Number of Clients:** displays the number of clients connected to the interface. Multiple ASIO applications are counted separately. WDM and WASAPI increase the number by one, no matter how many WDM / WASAPI applications play audio.
- **USB Data Errors:** counts USB data errors. Poor quality or long USB cables, as well as irradiation, can be the source of connection errors on the USB bus.
- **Reset:** A click on this button resets the error count.

## System Performance Test Section

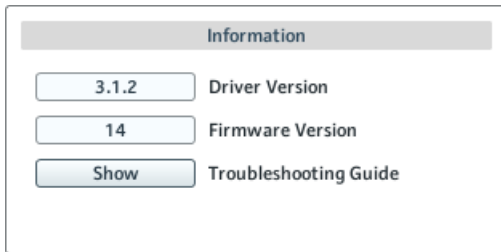


The System Performance Test section in the Diagnostics page of the Control Panel.

The **System Performance Test** section provides monitoring of the current DPC (Deferred Procedure Call) latency value of your Windows system. A Deferred Procedure Call is a Windows mechanism which allows high-priority tasks (such as the basic system tasks) to delay lower-priority tasks. The section has two displays and two buttons:

- **Current Latency:** displays the current DPC latency value.
- **Maximum Latency:** displays the highest DPC latency value monitored since the last time you either started or restarted monitoring.
- **Reset:** Press this button to reset the **Maximum Latency** value to zero.
- **Start/Stop:** Press this button to start monitoring DPC latency. Once started, the button label changes to **Stop**.

## Information Section



The Information section in the Diagnostics page of the Control Panel.

The **Information** section displays information about driver and firmware, and provides access to the Audio Troubleshooting Guide. This section has two displays and a button:

- **Driver Version:** See the currently installed driver version here.
- **Firmware Version:** See the currently installed firmware version here.
- **Troubleshooting Guide:** Click **Show** to open the Audio Troubleshooting Guide.

## 7.2 Advanced Configuration on Mac OS X

The advanced audio and MIDI settings are accessed from the Mac OS X Audio MIDI Setup.



If you experience problems with your setup, please refer to the Audio Troubleshooting Guide which you can access directly from the software's documentation folder.

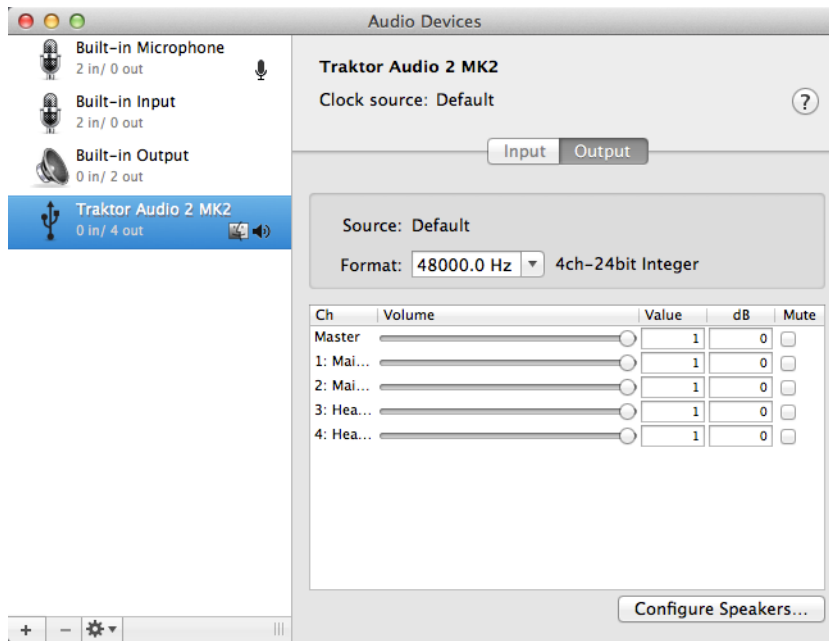
To open the Audio MIDI Setup utility:

► Go to *Applications > Utilities > Audio MIDI Setup*.

→ The Audio MIDI Setup utility will pop up in a window, entitled **Audio Devices**.

The left half of the window displays the different hardware and software in and outs installed on the computer. If not selected already, click on **Traktor Audio 2 MK2** to utilize the TRAKTOR AUDIO 2 device.

## Output Pane



The Output pane of the Audio MIDI Setup utility in Mac OS X.

The Audio MIDI Setup's **Output** pane allows for selection of sample rate settings. The relevant element here is the **Format** drop-down menu.

- **Format:** Choose a sample rate that is compatible with your music application and suited to your computing power. A higher sample rate improves the audio quality but also causes higher CPU load.

## Input Pane

As the TA2 provides no inputs, the Input pane will stay grayed out in the Audio MIDI Setup utility.

## 8 Troubleshooting and FAQ

The information provided in this section should help you to solve most of the problems you may encounter while you are using the TRAKTOR AUDIO 2.

### 8.1 Solving Hardware-related Problems

All Native Instruments products are extensively tested in real life situations during the development phase. However, if you encounter any problems with your hardware, please check the following points:

- Verify that you have installed the latest driver and the latest software update. Check the Native Instruments website for further information.
- Make sure the TRAKTOR AUDIO 2 is connected directly to a USB port of the computer and not through a USB hub.
- Make sure you use one of the USB cables provided with TA2.
- Disconnect all other USB devices from the computer (except keyboard/mouse).
- Try using another USB port on your computer.

If none of these tips help, please contact our Technical Support team. The contact information is available under the following URL: <http://www.native-instruments.com/contactinfo>. In case the TRAKTOR AUDIO 2 needs to be returned, the Technical Support team at Native Instruments will assign you an **RA (Return Authorization)** number, which is required to handle your return. Packages returned without this RA number will not be correctly identified and as such might not be processed properly.

## 8.2 How to Check Whether the TRAKTOR AUDIO 2 Drivers are Installed on Windows Correctly

Open *Start > All Programs > Native Instruments > TRAKTOR AUDIO 2 MK2*. There you will find the helper application TRAKTOR AUDIO 2 MK2 Control Panel. Make sure that the device is connected to the computer and open the Control Panel. If all the drop-down menus are grayed out (i.e., there are no presets in the preset drop-down list and no sample rate values to choose from) there must be something wrong with the connection. If the *TRAKTOR AUDIO 2 MK2* entry in the Native Instruments folder of the Start Menu is missing, the driver is most probably not installed.

- If the driver is not installed, you can install it as described in section [↑6.1, Driver Software Installation on Windows](#).
- If the driver is not recognized, check your USB connection as described in section [↑4, Using TRAKTOR AUDIO 2 with Your Computer](#).
- As with any other USB device, the driver installs exactly for one USB port. If you connect the TRAKTOR AUDIO 2 to another port, a standard Windows dialog opens in which you can install the driver to that port. If you have previously installed the driver on your computer once, Windows will find the right drivers itself once that you start the driver installation procedure. If you cancel the installation procedure, the driver will not be installed and the interface will not work on that port.
- If you do not know whether drivers were installed correctly, it is advisable to start the setup program of the TRAKTOR AUDIO 2 again (see section [↑6.1, Driver Software Installation on Windows](#)). If the setup program states that it will first uninstall the drivers, you already have installed the drivers on your computer. In this case you can connect the device to any other USB port and Windows will find the right driver when installing the TRAKTOR AUDIO 2 on another USB port.

## 8.3 USB Troubleshooting

If you experience problems caused by the USB connection between the TRAKTOR AUDIO 2 and your computer, check the following sections first; several possible sources for USB issues are covered here.

### Using a powered USB hub

Connect the TRAKTOR AUDIO 2 to a USB port directly on your computer. In certain situations, a powered USB hub may also work (e.g., if you are having problems connecting your TRAKTOR AUDIO 2 to an onboard USB port).

### Recommended USB-ports (MacBook Only)

For a current list of recommended ports on Mac Laptops (MacBook and MacBook Pro). Please refer to our knowledge base article <http://www.native-instruments.com/knowledge/questions/263>.

### Disable USB Energy Saving Mode (Windows only)

If the TRAKTOR AUDIO 2 is causing crashes or performing badly on a Windows machine, disable power management to the USB hubs first; see the Windows documentation for further instructions.

### Update the Driver

Whenever you encounter problems, you should also check if you have the latest software installed. For updates, visit the product's homepage on our website <http://www.native-instruments.com>.

## 8.4 Physically Re-configuring the TRAKTOR AUDIO 2

Connect the TRAKTOR AUDIO 2 to another USB port on your computer. Try all USB ports on your computer until you find the one that works best.

## 8.5 Check your IRQs (Windows only)

IRQ stands for Interrupt Request. This is the way in which Windows allocates resources to the various devices and ports in your system. If your TRAKTOR AUDIO 2 is on a port that shares an IRQ with other devices, you may have an IRQ conflict. Please refer to the Knowledge Base on the Native Instruments website and contact support.

This section contains some of the most frequently asked questions and answers along with references to Knowledge Base articles for additional details. In order to find an article, please visit the Native Instruments website, navigate to the Knowledge Base in the Support section and enter the article number in the search field.

## 8.6 Installation Folder Not Found by an Update Installer

If you have manually moved the location of a Native Instruments application on your hard drive, the installer, upon attempting to run an update, will display an error message and abort the installation. You can correct the application path in Service Center from the [Overview](#) tab. If an application cannot be found, a [Locate](#) button will appear on this tab. Click this button and browse to the actual location of the application.

## 8.7 Audio Clicks and Drop-outs When Playing Tracks

If you hear clicks and/or drop-outs when a track is playing, you might need to increase the latency setting of your TRAKTOR AUDIO 2. To learn how to do this, please refer to section [↑7, Advanced Configuration of Your TRAKTOR AUDIO 2](#) which thoroughly describes the TRAKTOR AUDIO 2 MK2 Control Panel — the tool that allows you to adjust the audio interface settings.

## 8.8 More Troubleshooting Resources

If none of the suggestions in this section covers your problem, the TRAKTOR 2 Manual provides more detailed information on the topics discussed in this Setup Guide. Also check if the Knowledge Base has an answer: <http://www.native-instruments.com/knowledge/>



## 9 Additional Documentation Resources

### 9.1 Further Documentation Resources

The following documents are also part of the TRAKTOR documentation:

- The **TRAKTOR Getting Started** guide provides you with essential information on using TRAKTOR, and explains how to accomplish fundamental tasks.
- The **TRAKTOR Manual** provides you with a detailed reference of your TRAKTOR software along with extra information (solving common issues, specifications, etc.).

You will find TRAKTOR documents in the documentation folder, which will be created in the program installation folder during the software installation, and you will find them on the Native Instruments website. The documents will also be available from the TRAKTOR software's [Help](#) menu.

In TRAKTOR DJ you can find the **TRAKTOR DJ InApp Help**. It provides you with essential information on using TRAKTOR DJ, and explains how to accomplish fundamental tasks.

### 9.2 Knowledge Base / Readme / Online Support

- ▶ Open the Service Center application and click on the [Support](#) button in the upper right corner. Here you will find direct links to the Native Instruments **Online Knowledge Base** and the **Online Support Form**.

The Online Knowledge Base gathers useful information about your Native Instruments product and can be of great help to solve possible issues you may encounter when working with Native Instruments products.

If no Knowledge Base entry matches your problem, or if the matching entry does not solve the problem, you can use the Online Support Form to contact the Technical Support team with Native Instruments. The Online Support Form will ask you to enter information about your hardware and software setup. This information is essential for our support team to be able to provide you with quality assistance.

When communicating with the Native Instruments support team, keep in mind that the more details you can provide about your hardware, your operating system, the version of the software you are running, and the problem you are experiencing, the better they will be able to help you. In your description, you should mention:

- How to reproduce the problem
- What you have already tried to fix the problem
- A description of your setup, including all hardware
- The brand and specifications of your computer

When installing new software or software updates, a Readme file is included that contains late breaking news and new information that was not yet included in the documentation. Please open and read this Readme file before contacting Technical Support.

## 9.3 Forum

In the Native Instruments User Forum you can discuss product features directly with other users and with experts moderating the forum.

<http://www.native-instruments.com/forum>

## 9.4 Updates

Whenever you encounter problems, it is recommended that you first download and install any available software updates. Updates are released regularly to fix known problems and to continuously improve the software. The version number of your software is displayed in the [About](#) dialog for any Native Instruments application. This dialog can be opened by clicking on the NI logo in the upper right corner of the user interface. Alternatively, you can find the version numbers of all installed Native Instruments applications when showing the details for an application within the [Overview](#) page of the Service Center. Updates are available on the [Update](#) page in Service Center or on our website under: <http://www.native-instruments.com/updates>

## 10 Technical Specifications

### Supported Drivers

- ASIO
- Code Audio
- DirectSound
- WASAPI

### Dimensions

- Size: 84,3 x 55 x 16,2mm / 3.3 x 2.17 x 0.63"
- Weight: 68g / 0.15lbs

Audio Converters (Inputs A/D)	
Channels D/A	4
Channels A/D	0
Sample Rates	44.1, 48Hz
Bit Resolution	24Bit

Line Outputs	
Max. Output Level	+11.7dBu
Dynamic Range (A weighted)	103 dB
THD+N (Max. Level)	20Hz - 20kHz
Cross Talk @ 1kHz to next channel	-105dB

Headphone output	
Load Impedance	80hms - 6000hms
Maximum Output Level	+5dBu dB @ 320hms
Dynamic Range (A weighted)	102dB
THD+N (Max Level, high Imp, 1000hms)	0.004%
Frequency Response, +/-1.4dB	20Hz - 20kHz

## Power Supply

Power supply via USB interface, 5V 500mA bus power from a computer - no external power supply is required. Low-power operation is possible from iOS devices. Full operation with iOS devices is achieved with use of an optional power supply (this increases output volumes and also charges the battery of the iOS device).

## Sockets

- 1 Headphones socket for stereo 1/8" (3.5mm) phone plug
- 1 MAIN socket for stereo 1/8" (3.5mm) phone plug
- 1 Mini USB Type B socket
- 1 DC power supply socket

## Environmental Specifications

- **Operating temperature:** +5 to +35°C (41 to 95°F), max 85% non-condensing humidity
- **Storage temperature:** 0 to 40°C (32 to 104°F), max 85% non-condensing humidity

Do not install this unit in locations exposed to high humidity or direct sunlight.

## 11 Hardware Returns

Please contact our Technical Support team prior to returning an item. If your product needs to be returned, they will assign you an RA (Return Authorization) number to expedite the processing of your return.

### **Contact Native Instruments Technical Support**

<http://www.native-instruments.com/support>